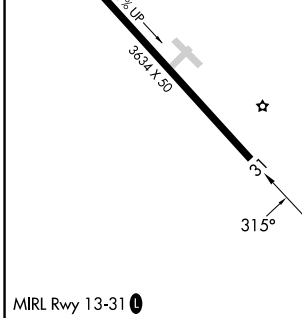
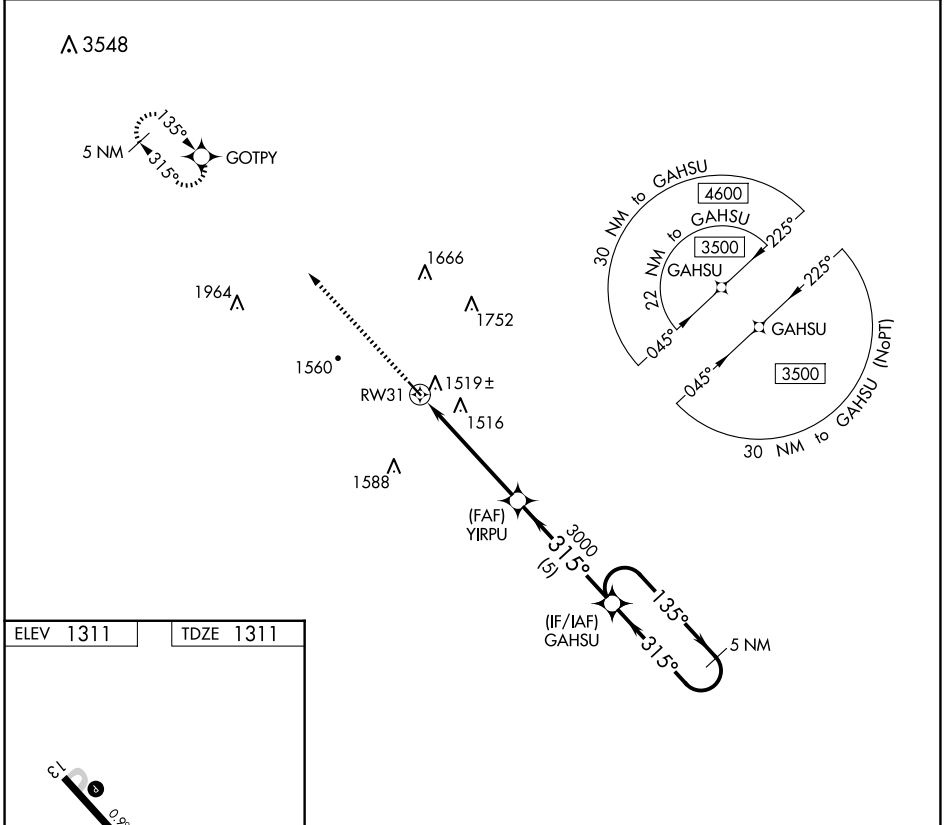


APP CRS	Rwy Idg	<b>3634</b>
<b>315°</b>	TDZE	<b>1311</b>
	Apt Elev	<b>1311</b>

# RNAV (GPS) RWY 31

AVA BILL MARTIN MEML (AOV)

RNP APCH.		MISSED APPROACH: Climb to 4600 direct GOTPY and hold, continue climb-in-hold to 4600.
<p><b>▼</b> Procedure NA at night. Rwy 31 helicopter visibility reduction below 1 SM NA.</p> <p><b>▲</b> NA Use Branson altimeter setting, if not received use Springfield Branson Natl altimeter setting and increase all MDA 20 feet.</p>		
BBG AWOS-3 <b>124.625</b>	SPRINGFIELD APP CON <b>126.35</b>	UNICOM <b>122.7 (CTAF) 0</b>



4600	GOTPY	Visual Segment - Obstacles.		GAHSU
↑	✦	YIRPU	5 NM Holding Pattern	
RW31		3000	135° →	3500
			← 315°	
	5.2 NM	5 NM		
CATEGORY	A	B	C	D
LNAV MDA	1860-1	549 (600-1)		NA

NC-3, 11 JUN 2026 to 09 JUL 2026

NC-3, 11 JUN 2026 to 09 JUL 2026