

APP CRS	Rwy Ldg	5501
189°	TDZE	1016
	Apt Elev	1016

RNAV (GPS) RWY 19

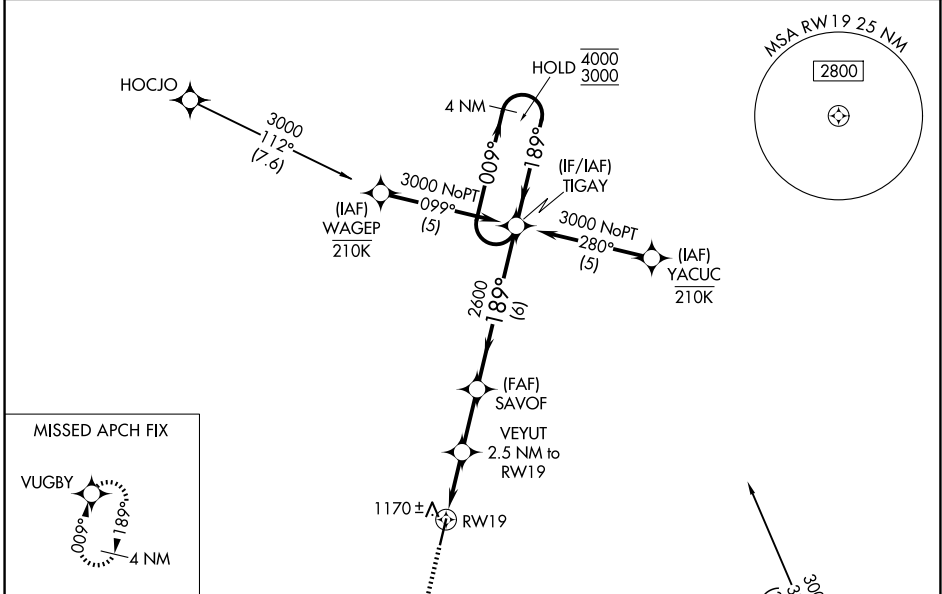
ALLEN COUNTY (K88)

RNP APCH - GPS.

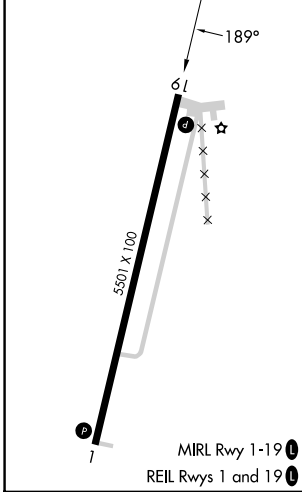
⚠ Rwy 19 helicopter visibility reduction below 3/4 SM NA. When local altimeter setting not received, use Chanute altimeter setting; increase all MDAs 40 feet and LNAV visibility Cat C 1/4 SM and Circling visibility Cat C 1/4 SM. VDP NA when using Chanute altimeter setting.

MISSED APPROACH: Climb to 3000 direct VUGBY and hold.

AWOS-3PT 128.325	KANSAS CITY CENTER 127.725 270.25	UNICOM 122.8 (CTAF) 0
----------------------------	---	---------------------------------



ELEV 1016	TDZE 1016
-----------	-----------



3000	VUGBY	VGSI and descent angles not coincident (VGSI Angle 3.00/TCH 40).	TIGAY	4 NM Holding Pattern
	VEYUT	SAVOF		009° → 4000
	2.5 NM to RWY 19	1.1 NM to RWY 19	1860	← 189° 3000
		3.00° TCH 52	2600	
		1.1	1.4	2.3 NM
				6 NM
CATEGORY	A	B	C	D
LNAV MDA	1420-1	404 (500-1)	1420-1 1/8 404 (500-1 1/8)	NA
CIRCLING	1480-1 464 (500-1)	1660-1 644 (700-1)	1660-1 3/4 644 (700-1 3/4)	NA

NC-2, 11 JUN 2026 to 09 JUL 2026

NC-2, 11 JUN 2026 to 09 JUL 2026