

| | | | |
|--|------------------------|-----------------------------|---|
| WAAS CH 63009 W24A | APP CRS 240° | Rwy Ldg TDZE Apt Elev | 5501 523 526 |
|--|------------------------|-----------------------------|---|

RNAV (GPS) RWY 24

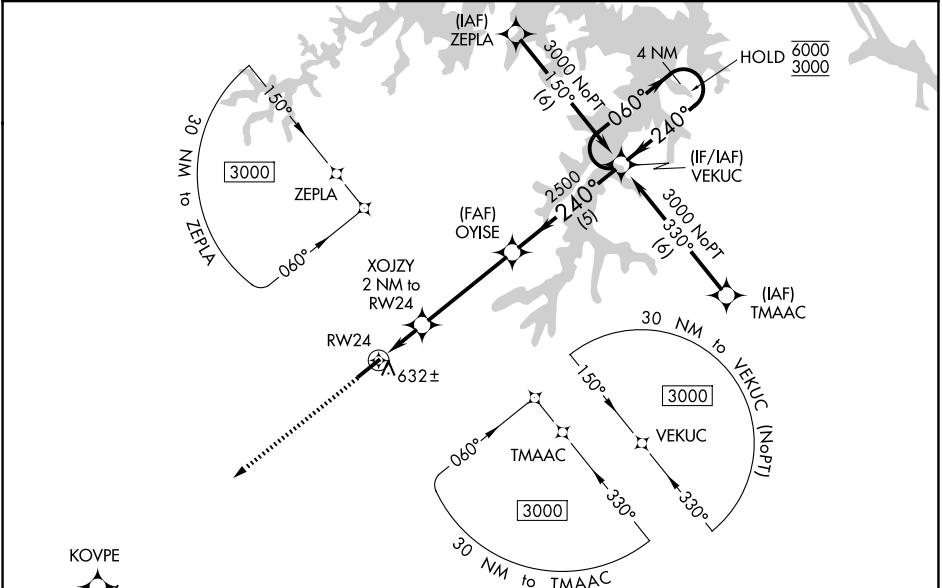
HENDERSON/OXFORD (HNZ)

RNP APCH - GPS.

▼ For uncompensated Baro-VNAV systems, LNAV/VNAV NA below -16°C or above 54°C. Baro-VNAV and VDP NA when using Roxboro altimeter setting. Rwy 24 helicopter visibility reduction below ¾ SM NA. When local altimeter setting not received, use Roxboro altimeter setting and increase LPV DA to 837 feet and all visibilities ¼ SM; increase LNAV/VNAV DA to 877 feet and all visibilities ¼ SM; increase all MDAs 80 feet and LNAV visibility Cat C/D ¾ SM, and Circling visibility Cat C/D ¼ SM.

MISSED APPROACH:
Climb to 3000 direct KOVPE and hold.

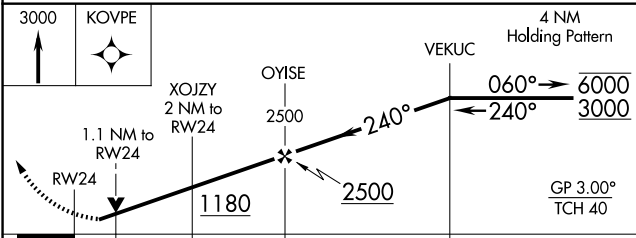
| | | |
|--------------------------|--|------------------------------|
| AWOS-3 118.625 | RALEIGH APP CON 132.35 256.9 | UNICOM 122.8(CTAF) |
|--------------------------|--|------------------------------|



SE-2, 11 JUN 2026 to 09 JUL 2026

SE-2, 11 JUN 2026 to 09 JUL 2026

| | |
|----------|----------|
| ELEV 526 | TDZE 523 |
|----------|----------|



| CATEGORY | A | B | C | D |
|--------------|----------------------|----------------------|-------------------------|-------------------------|
| LPV DA | | 773-¾ | 250 (300-¾) | |
| LNAV/VNAV DA | | 813-7/8 | 290 (300-7/8) | |
| LNAV MDA | | 900-1 | 377 (400-1) | |
| CIRCLING | 960-1 434 (500-1) | 980-1 454 (500-1) | 1100-1½ 574 (600-1½) | 1280-2½ 754 (800-2½) |

