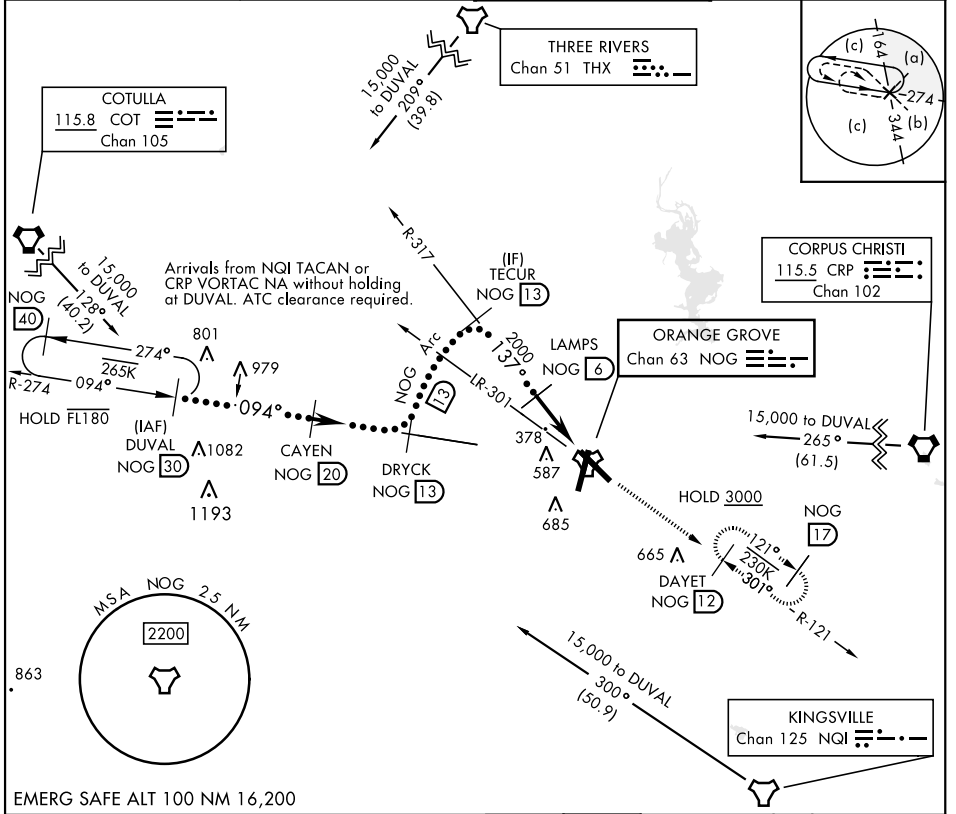


HI-TACAN Y RWY 13

TACAN Chan 63	APCH CRS 137°	Rwy ldg TDZE Arpt Elev	8001 257 257	[USN]	ORANGE GROVE NALF (KNOG)
-------------------------	-------------------------	------------------------------	---	-------	--------------------------

MISSED APPROACH: Climb to 700, then climb to 3000 intercept NOG TACAN R-121 to DAYET and hold.

ATIS ★ 254.35	KINGSVILLE APP CON 119.90 290.45	TOWER ★ 128.4 281.425	GND CON 229.4
-------------------------	--	---------------------------------	-------------------------

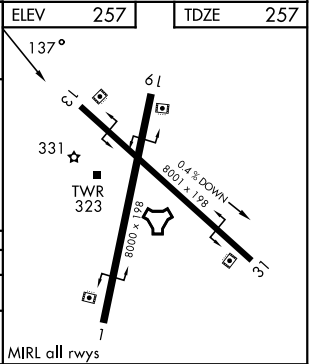


SC-3, 11 JUN 2026 to 09 JUL 2026

SC-3, 11 JUN 2026 to 09 JUL 2026

EMERG SAFE ALT 100 NM 16,200

DUVAL NOG 30	CAYEN NOG 20	DRYCK NOG 13	TECUR NOG 13	LAMPS NOG 6	NOG 1.8	NOG TACAN	SPARS NOG 1.2	ELEV 257	TDZE 257
* 15,000							3000 NOG R-121	DAYET NOG 12	
* Or as assigned							8000		
							3000 NOG 13	2000	
							TCH 50		
							4.8 NM		
							0.5		
CATEGORY	C		D		E				
S-13	640-1½		383		(400-1½)				
CIRCLING	920-1¾ 663 (700-1¾)		1000-2½ 743 (800-2½)		1000-2¾ 743 (800-2¾)				



HI-TACAN Y RWY 13