

WAAS CH <b>7708</b> <b>W35A</b>	APP CRS <b>355°</b>	Rwy Ldg TDZE Apt Elev	<b>4201</b> <b>1498</b> <b>1500</b>
---------------------------------------	------------------------	-----------------------------	---

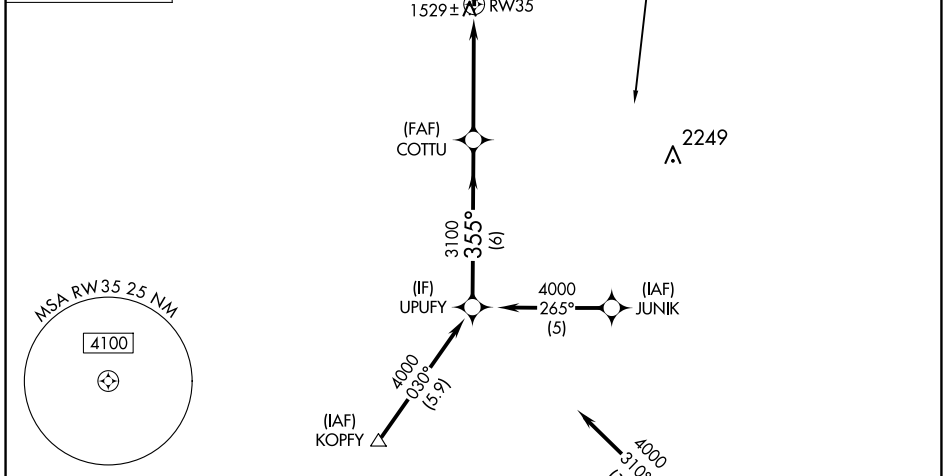
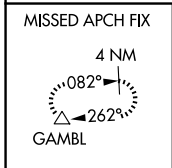
# RNAV (GPS) RWY 35

CRETE MUNI (CEK)

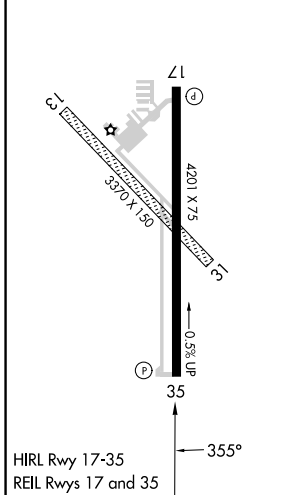
**NA** Baro-VNAV NA. DME/DME RNP-0.3 NA. Use Lincoln altimeter setting; when not received, use Beatrice altimeter setting. Visibility reduction by helicopters NA.

**MISSED APPROACH:** Climb to 4000 direct PIYB and via 327° track to GAMBL and hold.

OMAHA APP CON <b>124.0 270.3</b>	UNICOM <b>122.8 (CTAF)</b>
-------------------------------------	-------------------------------

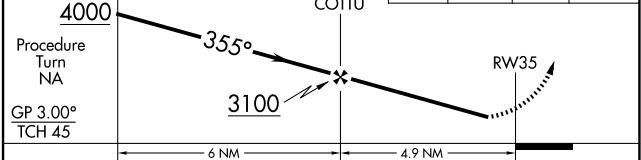


ELEV 1500	TDZE 1498
-----------	-----------



VGSI and RNAV glidepath not coincident (VGSI Angle 3.00°/TCH 40).

4000	PIYB	GAMBL
↑	✦	tr 327°



CATEGORY	A	B	C	D
LPV DA	1824-1¼	326 (400-1¼)		NA
LNAV/VNAV DA	1855-1¼	357 (400-1¼)		NA
LNAV MDA	2040-1	542 (600-1)		NA
CIRCLING	2140-1	640 (700-1)		NA

NC-2, 11 JUN 2026 to 09 JUL 2026

NC-2, 11 JUN 2026 to 09 JUL 2026