

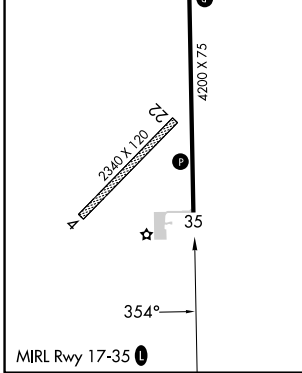
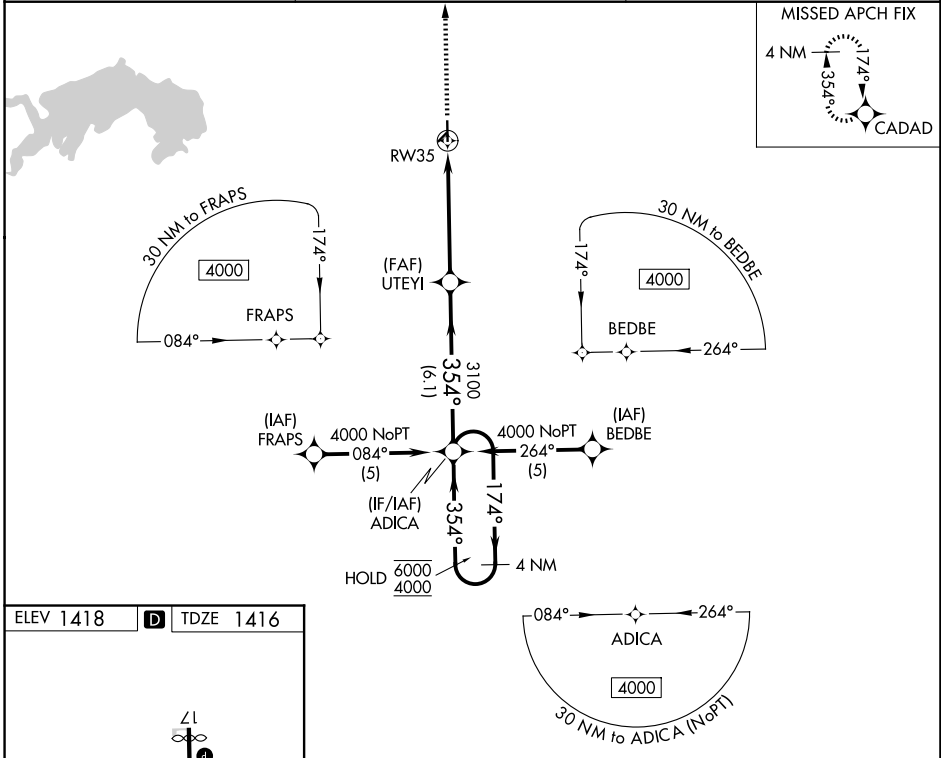
APP CRS	Rwy Ldg	<b>4200</b>
<b>354°</b>	TDZE	<b>1416</b>
	Apt Elev	<b>1418</b>

# RNAV (GPS) RWY 35

MORITZ MEML (K61)

RNP APCH - GPS.	MISSED APPROACH: Climb to 4000 direct CADAD and hold.
<p>▼ VDP NA when using CNK altimeter setting. Rwy 35 helicopter visibility reduction below 3/4 SM NA. Circling NA to Rwys 4 and 22. When local altimeter setting not received, use CNK altimeter setting and increase all MDAs 60 feet.</p> <p>▲ NA</p>	

AWOS-3PT <b>118.225</b>	KANSAS CITY CENTER <b>134.9 363.2</b>	UNICOM <b>122.8 (CTAF) 0</b>
----------------------------	--	---------------------------------



4000	CADAD	ADICA	4 NM Holding Pattern
↑	✧	UTUYI	174° → 6000 ← 354° 4000
		RW35	1.5 NM to RW35 3.04° TCH 40
		ADICA	3.6 NM to ADICA 6.1 NM to RW35
CATEGORY	A	B	C
LNAV MDA	1940-1	524 (600-1)	NA
CIRCLING	1940-1 522 (600-1)	2260-1¼ 842 (900-1¼)	NA