

APP CRS <b>275°</b>	Rwy Ldg TDZE Apt Elev	<b>3727</b> <b>670</b> <b>670</b>
------------------------	-----------------------------	-----------------------------------------

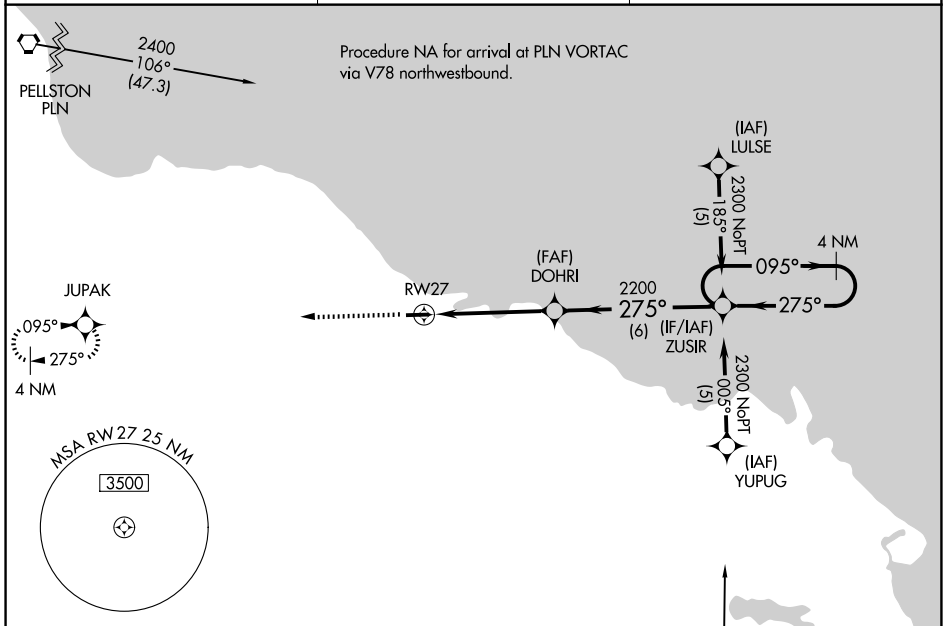
# RNAV (GPS) RWY 27

PRESQUE ISLE COUNTY (PZQ)

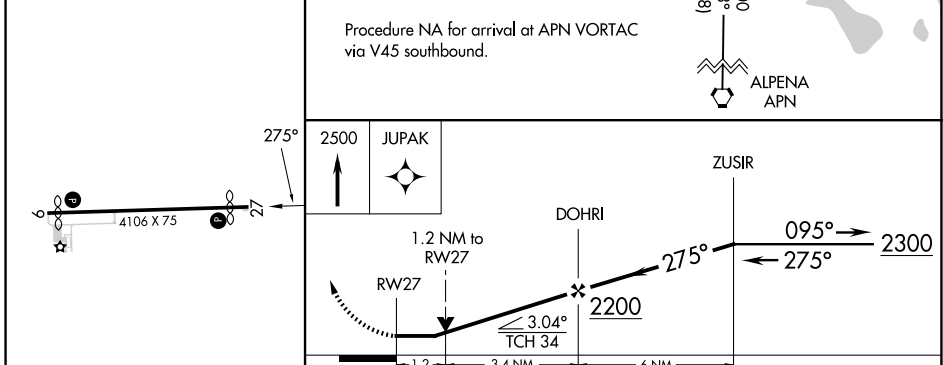
**⚠** DME/DME RNP-0.3 NA. Circling NA at night to Rwy 9.  
**⚠** NA If local altimeter setting not received, use Alpena County Rgnl altimeter setting and increase all MDAs 60 feet.  
 VDP NA with Alpena County Rgnl altimeter setting.

MISSED APPROACH: Climb to 2500 direct JUPAK and hold.

AWOS-3P <b>118.125</b>	ALPENA APP CON ★ <b>128.425 379.3</b>	CTAF <b>122.9</b>
---------------------------	------------------------------------------	----------------------



ELEV 670	TDZE 670
----------	----------



CATEGORY	A	B	C	D
LNAV MDA	1100-1	430 (500-1)	1100-1¼ 430 (500-1¼)	NA
CIRCLING	1200-1 530 (600-1)	1240-1 570 (600-1)	1260-1½ 590 (600-1½)	NA

REIL Rws 9 and 27 **⓪**  
 MIRL Rwy 9-27 **⓪**

EC-1, 11 JUN 2026 to 09 JUL 2026

EC-1, 11 JUN 2026 to 09 JUL 2026