

VORTAC GVE 115.6 Chan 103	APP CRS 026°	Rwy Ldg TDZE Apt Elev	N/A N/A 464
---	------------------------	-----------------------------	--

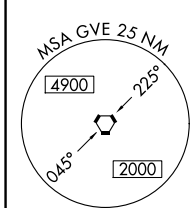
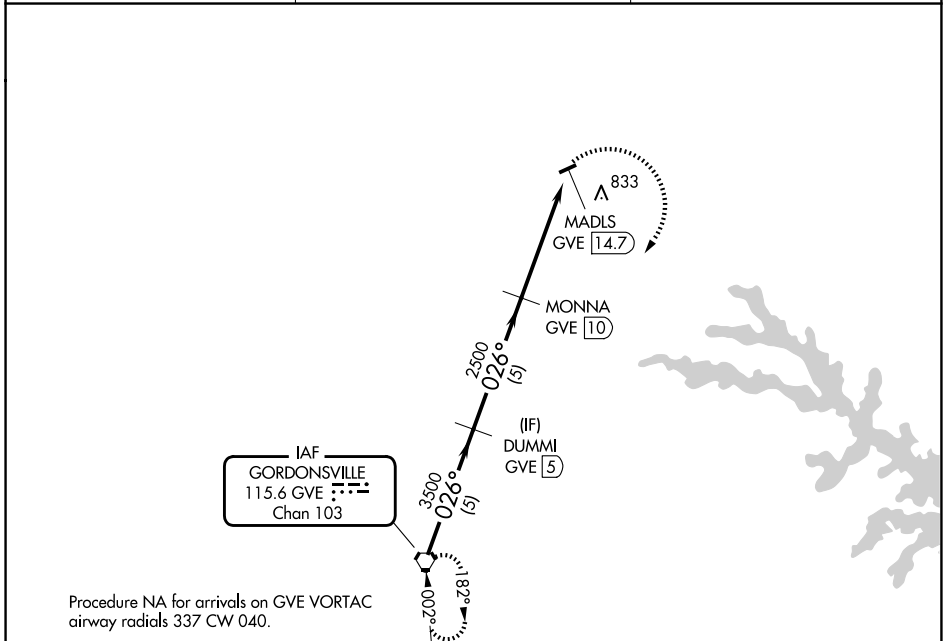
VOR/DME-A

ORANGE COUNTY (OMH)

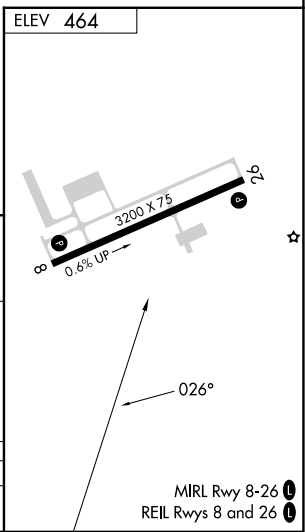
⚠ Circling to Rwy 26 NA at night. When local altimeter setting not received, use Charlottesville altimeter setting and increase all MDA 80 feet.
⚠ Helicopter visibility reduction below 1 SM NA.

MISSED APPROACH: Climbing right turn to 3500 direct GVE VORTAC and hold.

AWOS-3 118.075	POTOMAC APP CON 132.85 323.125	UNICOM 122.8 (CTAF)
--------------------------	--	-------------------------------



	GVE VORTAC	DUMMI GVE (5)	MONNA GVE (10)	MADLS GVE (14.7)	3500 GVE
	3500	3500	2500		
	026°	026°			
	5 NM	5 NM	4.7 NM		
CATEGORY	A	B	C	D	
CIRCLING	2000-1¼ 1536 (1600-1¼)	2000-1½ 1536 (1600-1½)	NA		



NE-3, 11 JUN 2026 to 09 JUL 2026

NE-3, 11 JUN 2026 to 09 JUL 2026