

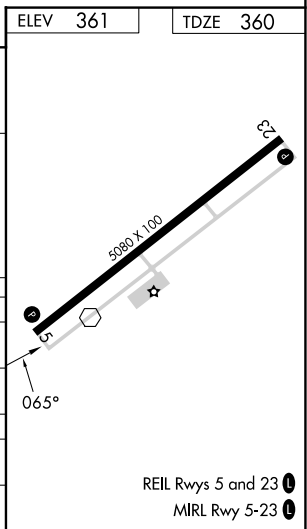
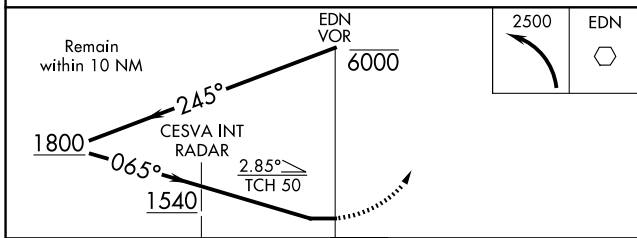
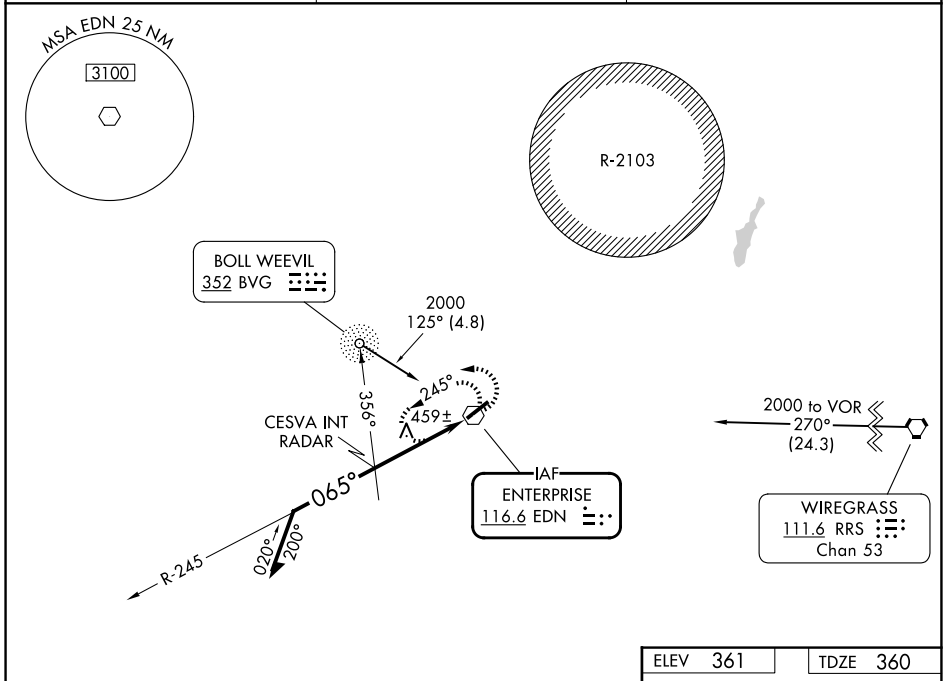
VOR EDN 116.6	APP CRS 065°	Rwy Ldg 5080
		TDZE 360
		Apt Elev 361

VOR RWY 5

ENTERPRISE MUNI (EDN)

<p>▼ ADF or RADAR required. ▲ NA Use Cairns AAF (Fort Rucker) altimeter setting.</p>	<p>MISSED APPROACH: Climbing left turn to 2500 in EDN VOR holding pattern.</p>
--	--

<p>AWOS-3PT 118.9</p>	<p>CAIRNS APP CON ★ 133.45 239.275</p>	<p>UNICOM 122.8 (CTAF)</p>
----------------------------------	---	---------------------------------------



CATEGORY	A	B	C	D
S-5	1540-1¼ 1180 (1200-1¼)	1540-1½ 1180 (1200-1½)	1540-3 1180 (1200-3)	NA
CIRCLING	1540-1¼ 1179 (1200-1¼)	1540-1½ 1179 (1200-1½)	1540-3 1179 (1200-3)	NA
CESVA INT/RADAR MINIMUMS				
S-5	820-1	460 (500-1)	820-1¼ 460 (500-1¼)	NA
CIRCLING	920-1	559 (600-1)	1100-2 739 (800-2)	NA

SE-4, 11 JUN 2026 to 09 JUL 2026

SE-4, 11 JUN 2026 to 09 JUL 2026