

| | | | |
|---------------------------------|------------------------|-----------------------------|---|
| WAAS CH 97328 W13A | APP CRS 131° | Rwy Ldg TDZE Apt Elev | 7000 208 208 |
|---------------------------------|------------------------|-----------------------------|---|

RNAV (GPS) RWY 13

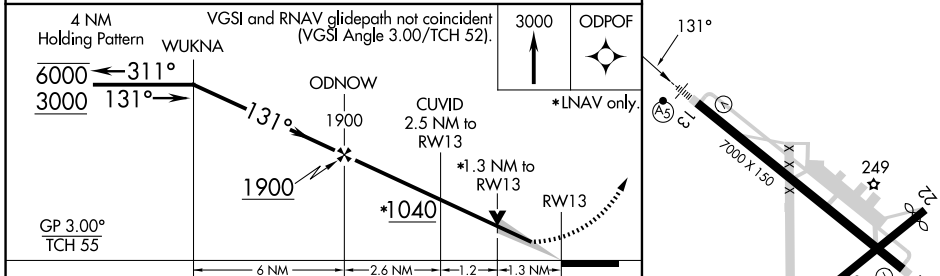
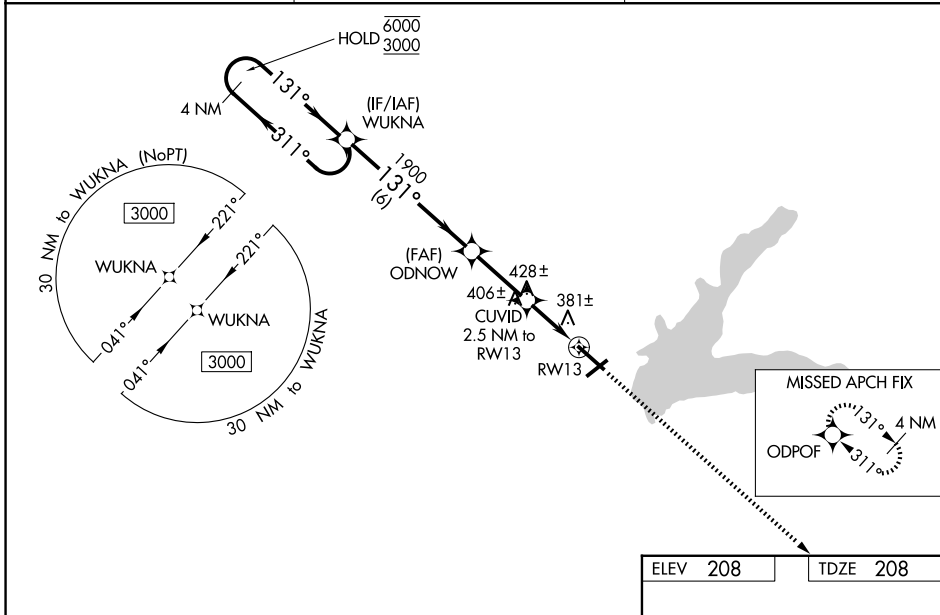
GRENADA MUNI (GNF)

RNP APCH.

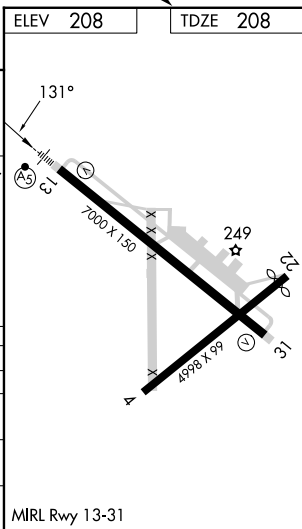
For uncompensated Baro-VNAV systems, procedure NA below -9°C or above 54°C. Baro-VNAV and VDP NA when using Greenwood altimeter setting. For inop ALS, increase LNAV/VNAV all Cats and LNAV Cat C/D visibility to 1½ SM. When local altimeter setting not received, use Greenwood altimeter setting: Increase all DAs 65 feet; increase all MDAs 80 feet and visibility LNAV Cats C and D and Circling all Cats ¼ SM. For inop ALS when using Greenwood altimeter setting, increase LPV all Cats visibility to ¾ SM and LNAV/VNAV all Cats visibility to 1½ SM. Circling Rwy 4, 22 NA at night.

MALSR
MISSED APPROACH: Climb to 3000 direct ODPOF and hold.

| | | |
|-----------------------------------|--|--------------------------------------|
| AWOS-3PT 118.025 | MEMPHIS CENTER 128.5 279.55 | UNICOM 122.8 (CTAF) |
|-----------------------------------|--|--------------------------------------|



| CATEGORY | A | B | C | D |
|--------------|---------|---------------|-------------------------------|-------------------------------|
| LPV DA | | 453-1/2 | 245 (300-1/2) | |
| LNAV/VNAV DA | | 666-1/8 | 458 (500-1/8) | |
| LNAV MDA | 680-1/2 | 472 (500-1/2) | 680-1 | 472 (500-1) |
| CIRCLING | 1000-1 | 792 (800-1) | 1000-2 1/4 792 (800-2 1/4) | 1060-2 3/4 852 (900-2 3/4) |



SC-4, 11 JUN 2026 to 09 JUL 2026

SC-4, 11 JUN 2026 to 09 JUL 2026