

| | | | |
|--|------------------------|-----------------------------|---|
| WAAS CH 40044 W34A | APP CRS 347° | Rwy Ldg TDZE Apt Elev | 2797 1363 1363 |
|--|------------------------|-----------------------------|---|

RNAV (GPS) RWY 34

ROCK RAPIDS MUNI (R.R.Q)

RNP APCH - GPS.

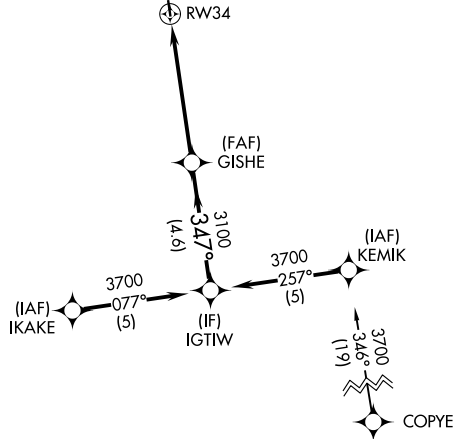
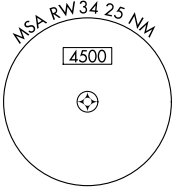
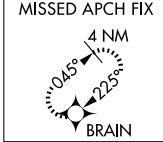
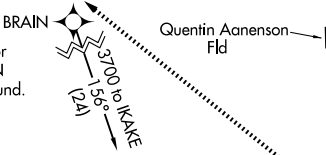
NA Procedure NA at night. Rwy 34 helicopter visibility reduction below 1 SM NA. Use Sioux Falls, SD altimeter setting.

MISSED APPROACH: Climb to 2200 then climbing left turn to 3700 direct BRAIN and hold.

SIoux FALLS APP CON *
126.9 284.725

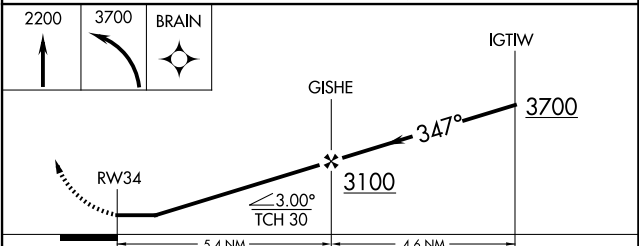
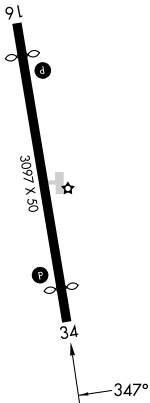
UNICOM
122.8 (CTAF)

Procedure NA for arrivals at BRAIN on T348 westbound.



ELEV 1363 TDZE 1363

MIRL Rwy 16-34
REIL Rwy 16 and 34



| CATEGORY | A | B | C | D |
|----------|-------------|-------------|---|----|
| LP MDA | 1960-1 | 597 (600-1) | | NA |
| LNAV MDA | 1960-1 | 597 (600-1) | | NA |
| CIRCLING | 1960-1 | 2040-1 | | NA |
| | 597 (600-1) | 677 (700-1) | | |

NC-3, 11 JUN 2026 to 09 JUL 2026

NC-3, 11 JUN 2026 to 09 JUL 2026