

APP CRS <b>192°</b>	Rwy Idg <b>3304</b>
	TDZE <b>41</b>
	Apt Elev <b>41</b>

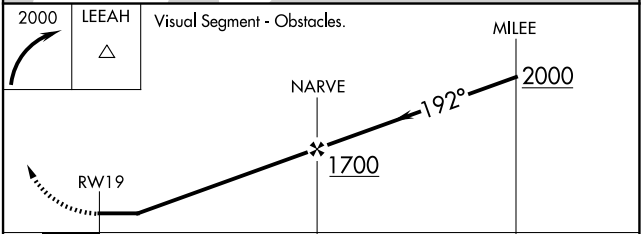
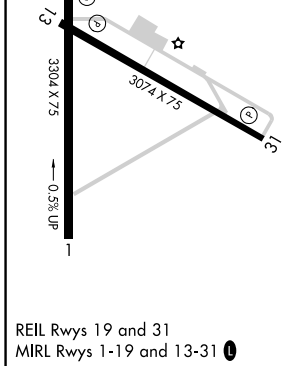
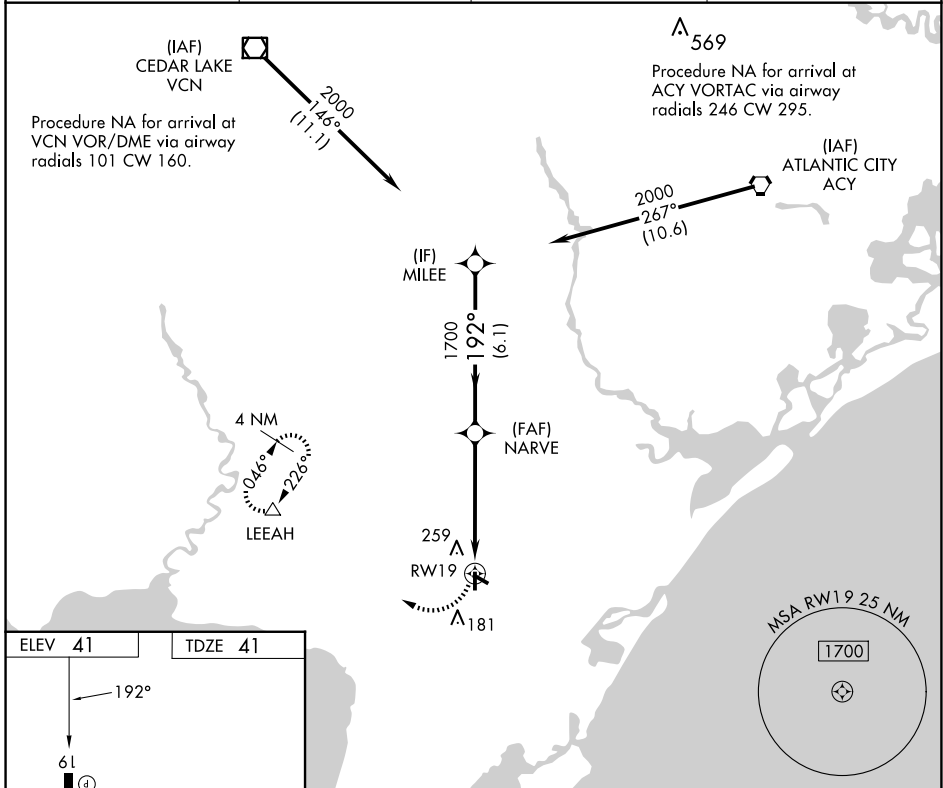
# RNAV (GPS) RWY 19

WOODBINE MUNI (OBI)

**NA** Rwy 19 Straight-in and Circling and Circling to Rwy 13, 31 NA at night. Rwy 13, 19, 31 helicopter visibility reduction below 1 SM NA. DME/DME RNP-0.3 NA. When local altimeter setting not received, use Millville Muni altimeter setting; increase all MDA 60 feet, and increase LNAV Cat C visibility ¼ mile.

**MISSED APPROACH:** Climbing right turn to 2000 direct LEEAH and hold.

AWOS-3 <b>120.475</b>	ATLANTIC CITY APP CON <b>124.6 327.125</b>	GCO <b>121.725</b>	UNICOM <b>123.05 (CTAF) 0</b>
--------------------------	---	-----------------------	----------------------------------



CATEGORY	A	B	C	D
LNAV MDA	500-1	459 (500-1)	500-1¼ 459 (500-1¼)	NA
CIRCLING	620-1	579 (600-1)	620-1½ 579 (600-1½)	NA

NE-2, 11 JUN 2026 to 09 JUL 2026

NE-2, 11 JUN 2026 to 09 JUL 2026