

WAAS CH 53530 W32A	APP CRS 317°	Rwy Ldg TDZE Apt Elev	3300 1082 1083
--	------------------------	-----------------------------	---

RNAV (GPS) RWY 32

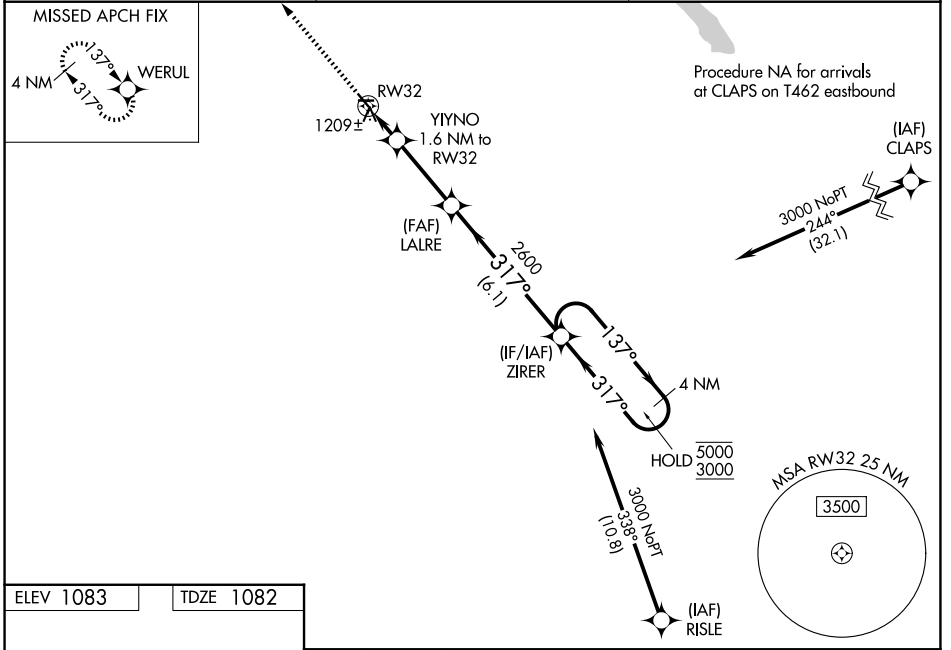
LAC QUI PARLE COUNTY (D.XX)

RNP APCH - GPS.

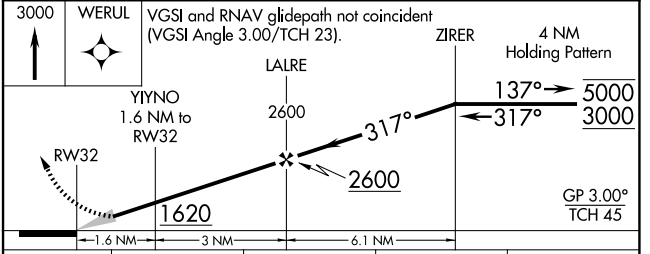
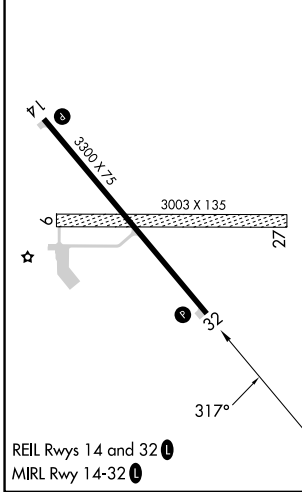
Baro-VNAV NA when using Appleton Muni altimeter setting. For uncompensated Baro-VNAV systems, LNAV/VNAV NA below -17°C or above 54°C. Circling NA to Rws 9 and 27. When local altimeter setting not received, use Appleton Muni altimeter setting; increase LPV DA to 1329 feet; increase LNAV/VNAV DA to 1409 feet and visibility ½ SM; increase all MDAs 60 feet and Circling Cat C visibility ½ SM.

MISSED APPROACH: Climb to 3000 direct WERUL and hold.

AWOS-3 118.975	MINNEAPOLIS CENTER 128.5 306.2	UNICOM 122.8 (CTAF) 0
--------------------------	--	---------------------------------



ELEV 1083	TDZE 1082
-----------	-----------



CATEGORY	A	B	C	D
LPV DA	1282-¾	200 (200-¾)		NA
LNAV/VNAV DA	1363-⅞	281 (300-⅞)		NA
LNAV MDA	1460-1	378 (400-1)	1460-1⅛ 378 (400-1⅛)	NA
CIRCLING	1640-1	557 (600-1)	1820-2 737 (800-2)	NA

NC-1, 11 JUN 2026 to 09 JUL 2026

NC-1, 11 JUN 2026 to 09 JUL 2026