

WAAS CH 40202 W36A	APP CRS 359°	Rwy Idg TDZE Apt Elev	5101 1228 1228
--	------------------------	-----------------------------	---

RNAV (GPS) RWY 36

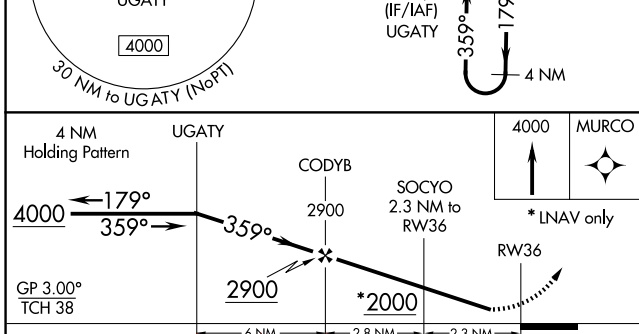
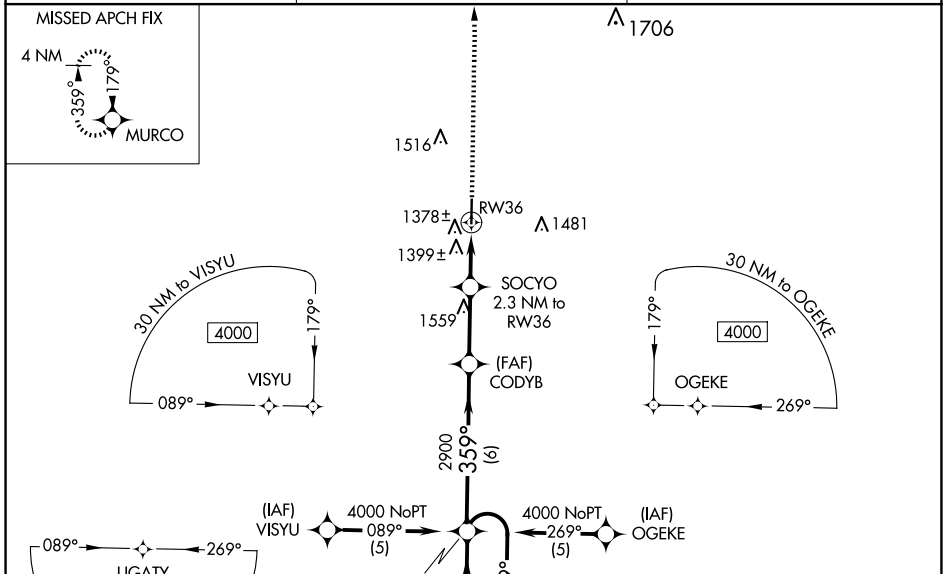
WEST PLAINS RGNL (UNO)

RNP APCH - GPS.

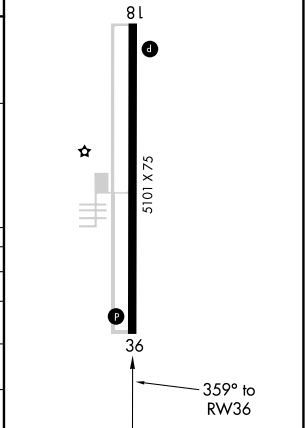
Baro-VNAV NA when using Mountain Home altimeter setting. Visibility reduction by helicopters NA. When local altimeter setting not received, use Mountain Home, AR altimeter setting: increase LPV DA to 1657 feet and all visibilities 1/2 SM; increase LNAV/VNAV DA to 1850 feet and all visibilities 1/4 SM; increase all MDAs 140 feet and visibility LNAV Cat C 1/4 SM and Circling Cat C 1/2 SM. For uncompensated Baro-VNAV systems, LNAV/VNAV NA below -17°C (2°F) or above 54°C (130°F).

MISSED APPROACH: Climb to 4000 direct MURCO and hold.

ASOS 123,825	MEMPHIS CENTER 120,075 289.4	UNICOM 122.8 (CTAF)
------------------------	--	-------------------------------



ELEV 1228	TDZE 1228
MIRL Rwy 18-36	
REIL Rwy 18 and 36	



CATEGORY	A	B	C	D
LPV DA	1520-1 292 (300-1)			NA
LNAV/VNAV DA	1713-1 485 (500-1 3/4)			NA
LNAV MDA	1660-1	432 (500-1)	1660-1 1/4 432 (500-1 1/4)	NA
CIRCLING	1720-1 492 (500-1)	1740-1 512 (600-1)	1820-1 1/2 592 (600-1 1/2)	NA

NC-3, 11 JUN 2026 to 09 JUL 2026

NC-3, 11 JUN 2026 to 09 JUL 2026