

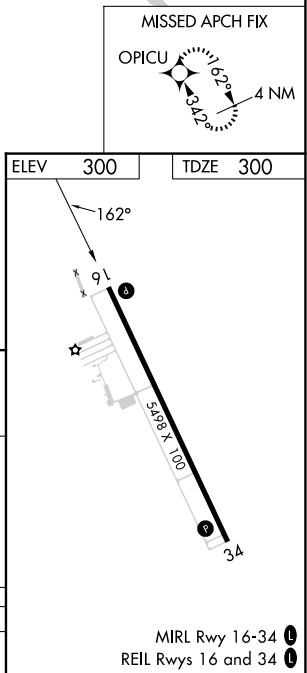
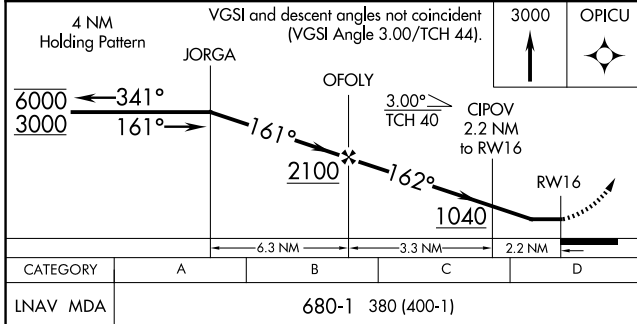
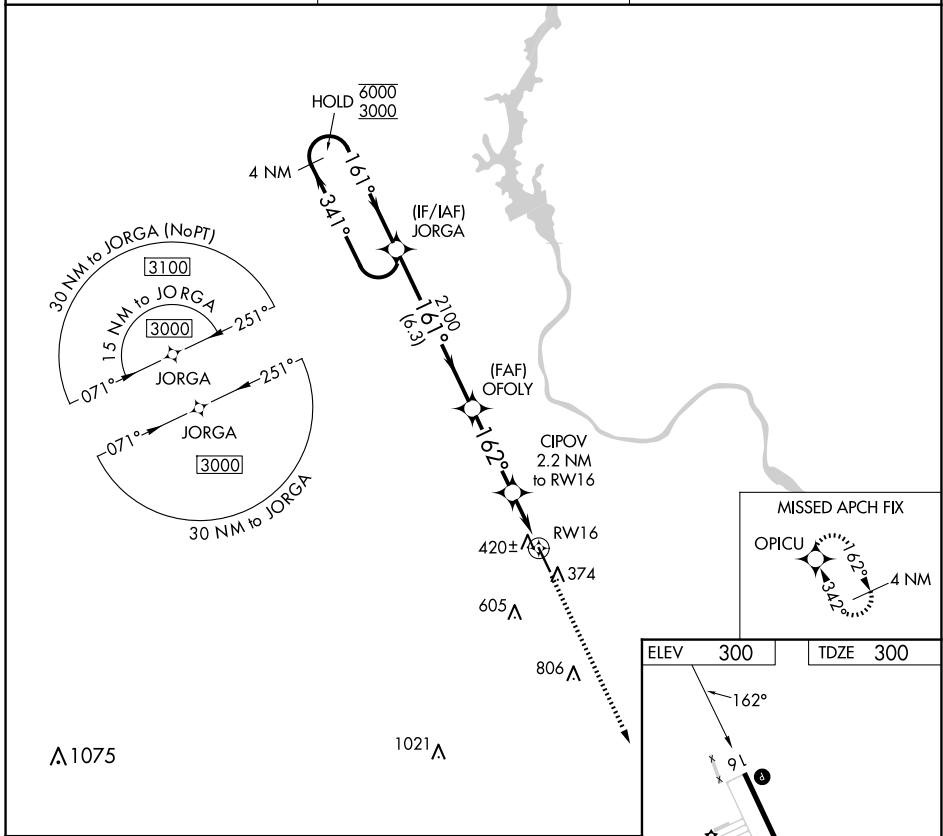
APP CRS	Rwy Idg	5498
162°	TDZE	300
	Apt Elev	300

RNAV (GPS) RWY 16

ANSON COUNTY/JEFF CLOUD FLD (A/F P)

RNP APCH - GPS.	<p>Procedure NA at night. Rwy 16 helicopter visibility reduction below 1 SM NA.</p>	MISSED APPROACH: Climb to 3000 direct OPICU and hold.
-----------------	---	---

AWOS-3 119.325	CHARLOTTE APP CON 120.05 307.8	UNICOM 122.8 (CTAF) 0
--------------------------	--	---------------------------------



SE-2, 11 JUN 2026 to 09 JUL 2026

SE-2, 11 JUN 2026 to 09 JUL 2026

MIRL Rwy 16-34
REIL Rws 16 and 34