

WAAS CH 69408 W34A	APP CRS 342°	Rwy Idg TDZE Apt Elev	5498 299 300
----------------------------------------	------------------------	-----------------------------	-----------------------------------------

RNAV (GPS) RWY 34

ANSON COUNTY/JEFF CLOUD FLD (A/F/P)

RNP APCH - GPS.

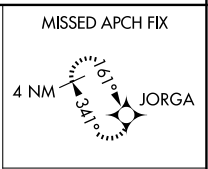
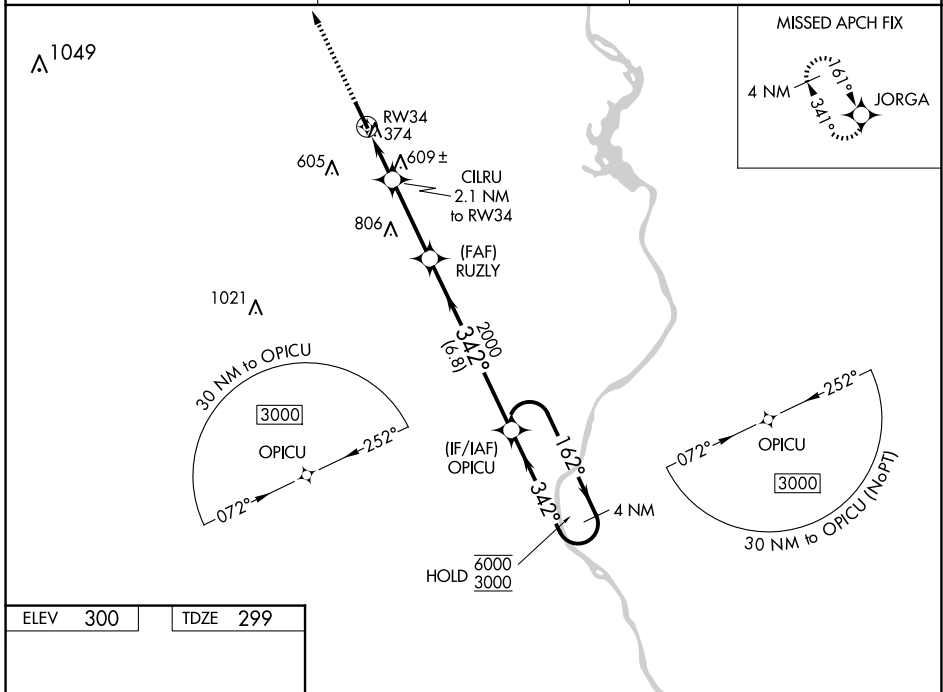
⚠
For uncompensated Baro-VNAV systems, procedure NA below -15°C or above 42°C. Rwy 34 helicopter visibility reduction below ¾ SM NA.

MISSED APPROACH: Climb to 3000 direct JORGA and hold.

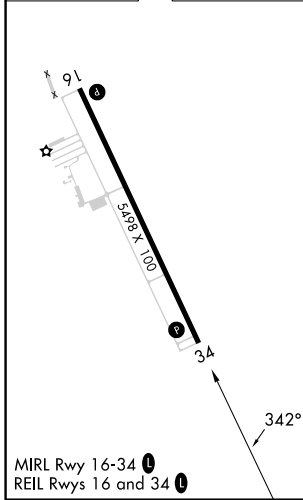
AWOS-3
119.325

CHARLOTTE APP CON
120.05 307.8

UNICOM
122.8 (CTAF) 0



ELEV 300	TDZE 299
----------	----------



3000	JORGA	OPICU	4 NM Holding Pattern
↑	✧		
CILRU 2.1 NM to RWY 34	RUZLY	OPICU	
RWY 34	2000	162° → 6000	← 342° 3000
1000	2000		GP 3.00° TCH 42
← 2.1 NM	← 3.1 NM	← 6.8 NM	
CATEGORY	A	B	C
LPV DA	649-1		350 (400-1)
LNAV/VNAV DA	957-1 7/8		658 (700-1 7/8)
LNAV MDA	860-1	561 (600-1)	860-1 5/8 561 (600-1 5/8)
CIRCLING	860-1	560 (600-1)	1080-2 1/4 780 (800-2 1/4) 1080-2 1/2 780 (800-2 1/2)

SE-2, 11 JUN 2026 to 09 JUL 2026

SE-2, 11 JUN 2026 to 09 JUL 2026