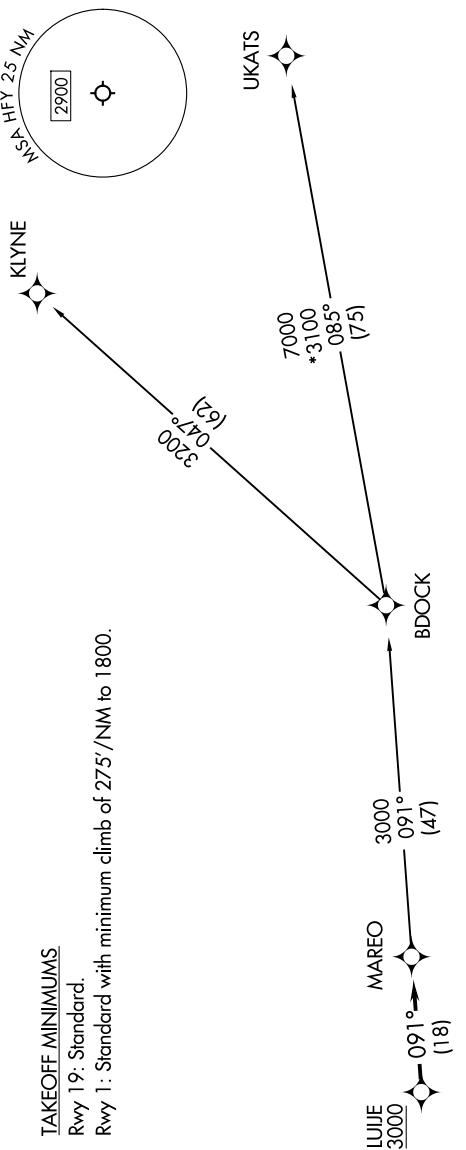


MAREO ONE DEPARTURE (RNAV)

EC-2, 11 JUN 2026 to 09 JUL 2026

**TOP ALTITUDE:
(JETS) 5000
(PROPS) 3000**

RNAV 1-DME/DME/IRU or GPS required.
RADAR required.



TAKEOFF MINIMUMS
Rwy 19: Standard.
Rwy 1: Standard with minimum climb of 275'/NM to 1800.

INDIANAPOLIS DEP CON
124.95 317.8

NOTE: Chart not to scale.

DEPARTURE ROUTE DESCRIPTION

ALL RUNWAYS: Climb on assigned heading for vectors to LUJJE on track 091° to MAREO, then on transition.
Maintain (jets) 5000/(Props) 3000, expect filed altitude 10 minutes after departure.

KLYNE TRANSITION (MAREO1.KLYNE):
UKATS TRANSITION (MAREO1.UKATS):