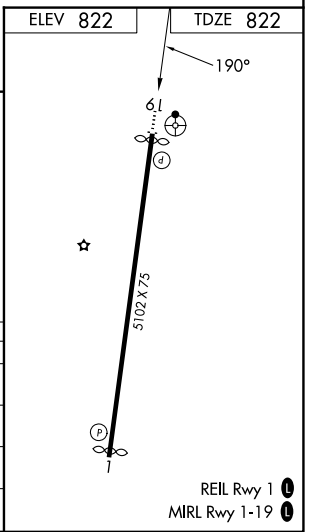
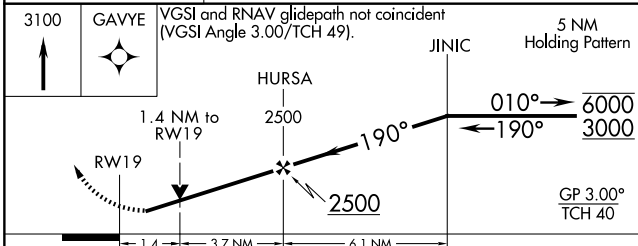
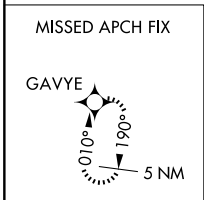
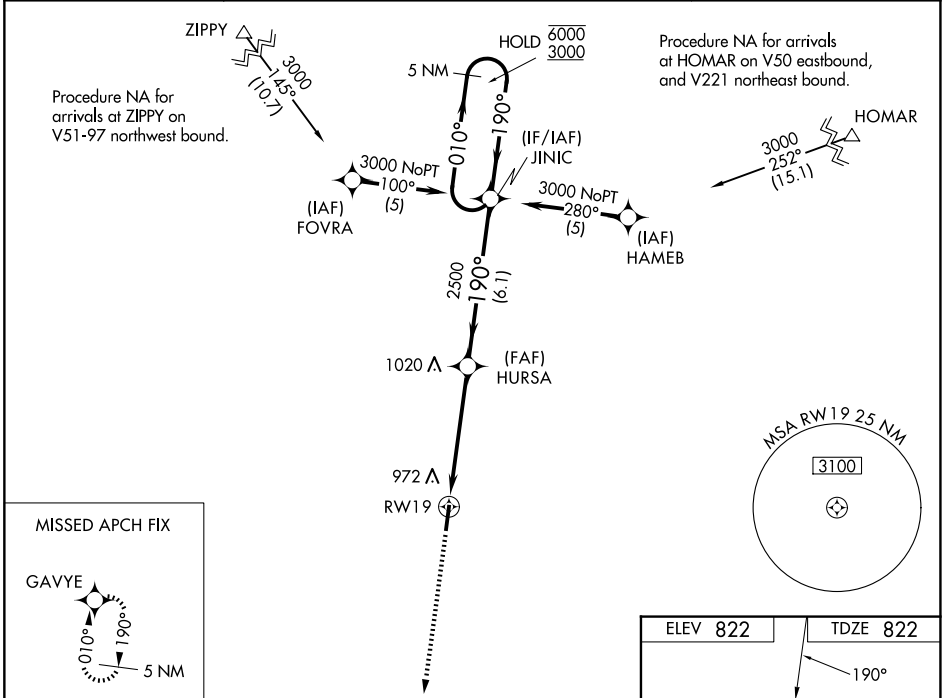


WAAS CH <b>53703</b> <b>W19A</b>	APP CRS <b>190°</b>	Rwy Ldg TDZE Apt Elev	<b>5002</b> <b>822</b> <b>822</b>
--	------------------------	-----------------------------	---

# RNAV (GPS) RWY 19

INDY SOUTH GREENWOOD (HFY)

RNP APCH - GPS.		ODALS	MISSED APPROACH: Climb to 3100 direct GAVYE and hold.
<p><b>⚠</b> Rwy 19 helicopter visibility reduction below 3/4 SM NA. For uncompensated Baro-VNAV systems, LNAV/VNAV NA below -16°C or above 54°C. Baro-VNAV and VDP NA when using Indianapolis Infil altimeter setting.</p>			
AWOS-3P <b>118.525</b>	INDIANAPOLIS APP CON <b>124.95 317.8</b>	GCO <b>121.725</b>	UNICOM <b>123.0 (CTAF) 0</b>



CATEGORY	A	B	C	D
LPV DA	1130-1 308 (400-1)			NA
LNAV/VNAV DA	1299-1 3/4 477 (500-1 3/4)			NA
LNAV MDA	1300-1	478 (500-1)	1300-1 3/8 478 (500-1 3/8)	NA
CIRCLING	1360-1 538 (600-1)	1380-1 558 (600-1)	1380-1 1/2 558 (600-1 1/2)	NA

EC-2, 11 JUN 2026 to 09 JUL 2026

EC-2, 11 JUN 2026 to 09 JUL 2026