

APP CRS	Rwy Idg	<b>5000</b>
<b>321°</b>	TDZE	<b>3727</b>
	Apt Elev	<b>3730</b>

# RNAV (GPS) RWY 32

HOLYOKE (HEQ)

RNP APCH-GPS.

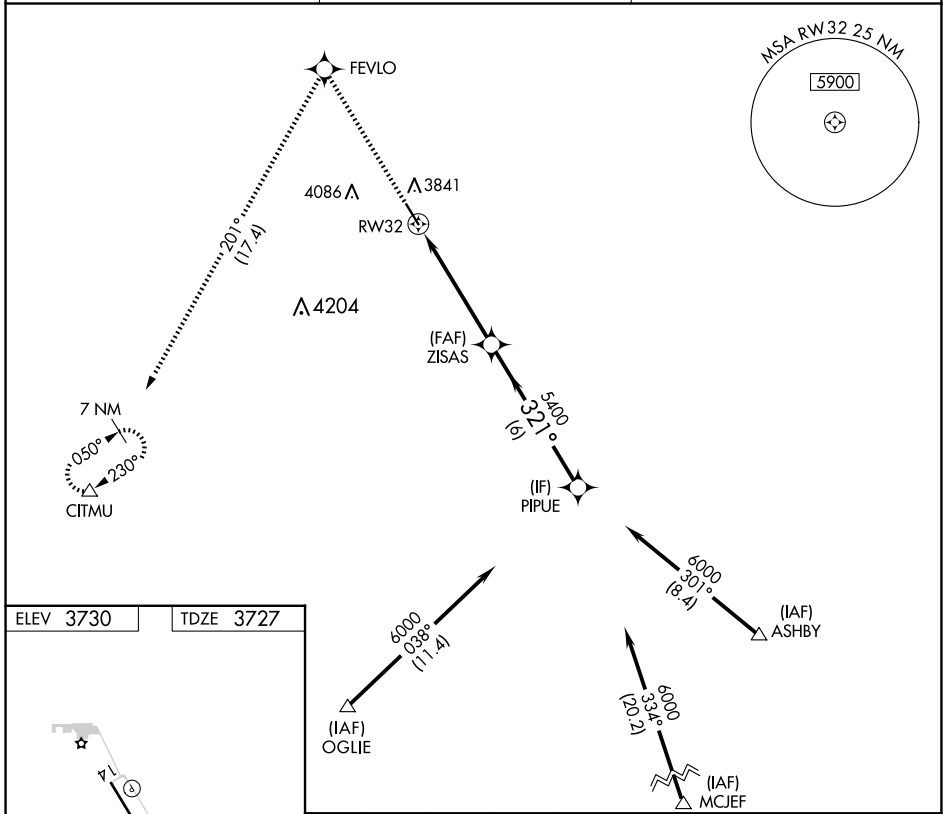
**▽** VDP NA when using Sidney Muni/Lloyd W. Carr Fld altimeter setting.  
**▲** When local altimeter setting not received, use Sidney altimeter setting and increase all MDAs 200 feet and visibility Cat C/D  $\frac{3}{8}$  SM. Rwy 32 helicopter visibility reduction below  $\frac{3}{4}$  SM NA.

MISSED APPROACH: Climb to 6500 direct FEVLO and on track 201° to CITMU and hold.

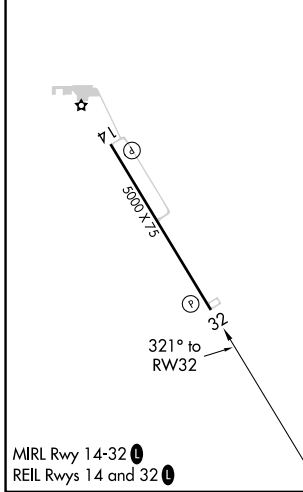
AWOS-3  
**119.275**

DENVER CENTER  
**118.475 225.4**

UNICOM  
**122.7 (CTAF) 0**



ELEV 3730	TDZE 3727
-----------	-----------



6500	FEVLO	tr 201°	CITMU	PIPUE
↑	✧		△	
0.7 NM to RW32		0.7 NM to RW32		6000
RW32		ZISAS		
3.05° TCH 40		5400		
0.7 NM		4.4 NM		6 NM
CATEGORY	A	B	C	D
LNAV MDA	4160-1 433 (500-1)			4160-1¼ 433 (500-1¼)

SW-1, 11 JUN 2026 to 09 JUL 2026

SW-1, 11 JUN 2026 to 09 JUL 2026