

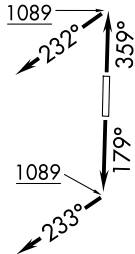
RNAV 1 - DME/DME/IRU or GPS required.

RADAR required.

**TOP ALTITUDE:  
ASSIGNED BY ATC**

LONE STAR DEP CON  
124.3 282.275  
CLNC DEL (When twr closed)  
121.35  
GND CON  
121.875  
MC KINNEY TOWER\*  
118.825 (CTAF)

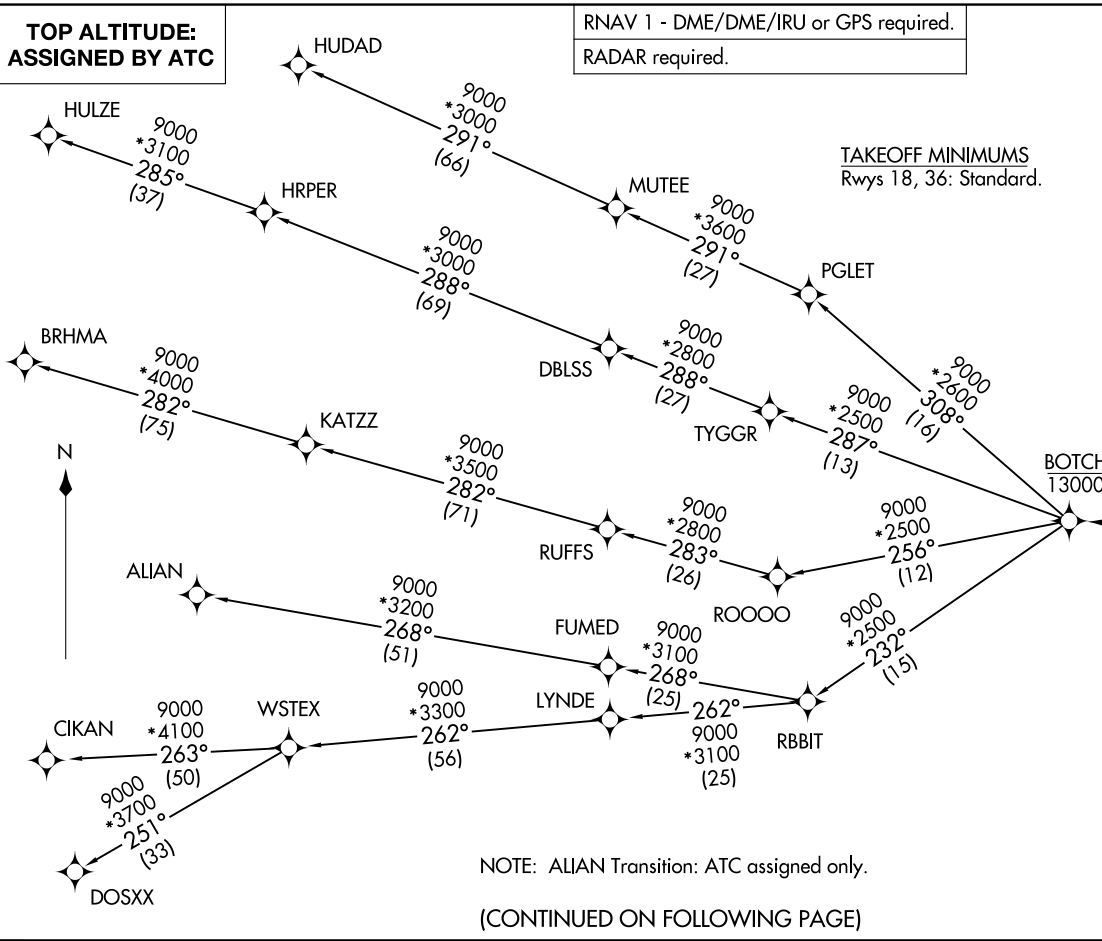
**TAKEOFF MINIMUMS**  
Rwys 18, 36: Standard.



(BOTCH2.BOTCH) 26134  
BOTCH TWO DEPARTURE (RNAV)

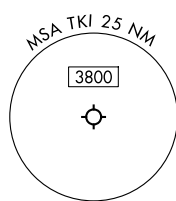
AL-6644 (FAA)

MCKINNEY NTL (TKX)  
DALLAS, TEXAS



NOTE: ALIAN Transition: ATC assigned only.

(CONTINUED ON FOLLOWING PAGE)



NOTE: Chart not to scale.

BOTCH TWO DEPARTURE (RNAV)  
(BOTCH2.BOTCH) 14MAY26

DALLAS, TEXAS  
MCKINNEY NTL (TKX)

# BOTCH TWO DEPARTURE (RNAV)



## DEPARTURE ROUTE DESCRIPTION

TAKEOFF RUNWAY 18: Climb on heading 179° to 1089, then on heading 233° or as assigned by ATC, for vectors to cross DEMII at or above 5000, thence. . .

TAKEOFF RUNWAY 36: Climb on heading 359° to 1089, then on heading 232° or as assigned by ATC, for vectors to cross DEMII at or above 5000, thence. . .

. . . on track 270° to cross BOTCH at or below 13000, then on (transition). Maintain ATC assigned altitude, expect filed altitude 10 minutes after departure.

ALIAN TRANSITION (BOTCH2.ALIAN)

BRHMA TRANSITION (BOTCH2.BRHMA)

CIKAN TRANSITION (BOTCH2.CIKAN)

DOSXX TRANSITION (BOTCH2.DOSXX)

HUDAD TRANSITION (BOTCH2.HUDAD)

HULZE TRANSITION (BOTCH2.HULZE)

WSTEX TRANSITION (BOTCH2.WSTEX)

SC-2, 11 JUN 2026 to 09 JUL 2026

SC-2, 11 JUN 2026 to 09 JUL 2026