

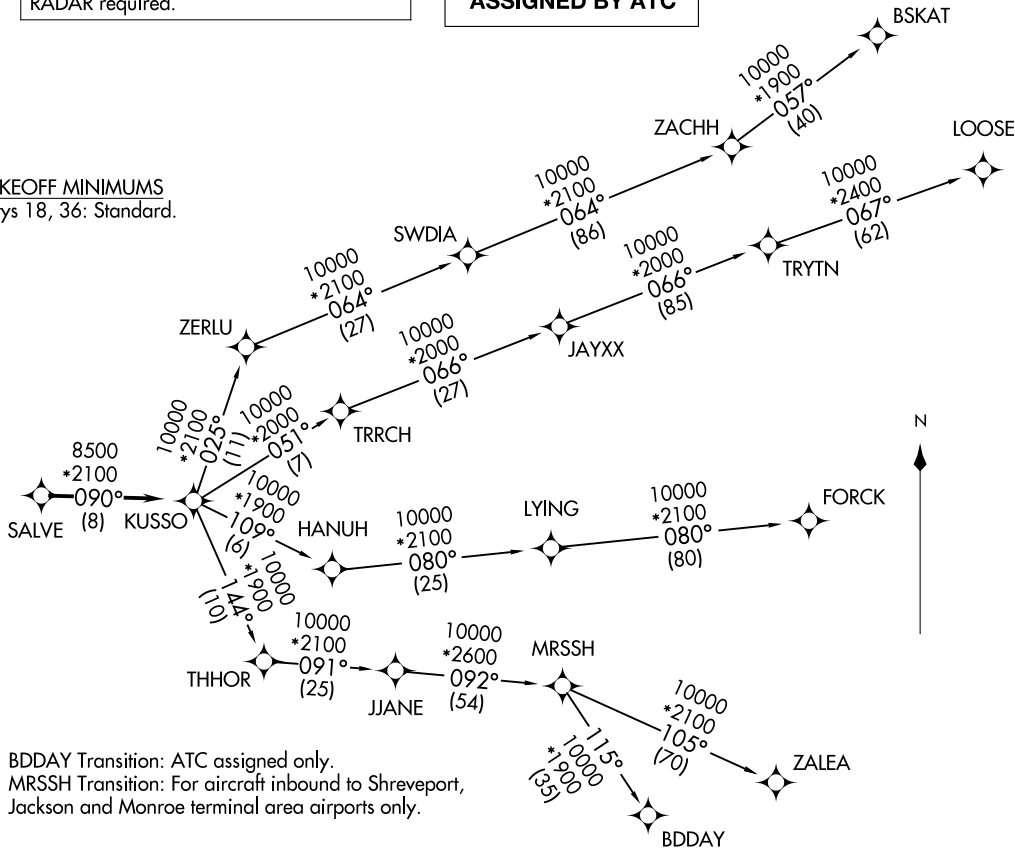
KUSSO THREE DEPARTURE (RNAV)  
(KUSSO3.KUSSO) 14MAY26

LONE STAR DEP CON  
124.3 282.275  
CLNC DEL (When twr closed)  
121.35  
GND CON  
121.875  
MC KINNEY TOWER ★  
118.825 (CTAF)

RNAV 1 - DME/DME/IRU or GPS required.  
RADAR required.

**TOP ALTITUDE:  
ASSIGNED BY ATC**

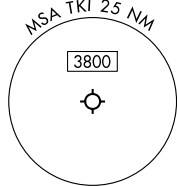
TAKEOFF MINIMUMS  
Rwys 18, 36: Standard.



NOTE: BDDAY Transition: ATC assigned only.  
NOTE: MRSSH Transition: For aircraft inbound to Shreveport, Jackson and Monroe terminal area airports only.

(CONTINUED ON FOLLOWING PAGE)

NOTE: Chart not to scale.



DALLAS, TEXAS  
MCKINNEY NTL (TKI)

(KUSSO3.KUSSO) 26134  
KUSSO THREE DEPARTURE (RNAV)

AL-6644 (FAA)

MCKINNEY NTL (TKI)  
DALLAS, TEXAS

# KUSSO THREE DEPARTURE (RNAV)



## DEPARTURE ROUTE DESCRIPTION

When entering controlled airspace, fly heading assigned by ATC, expect RADAR vectors to SALVE, then on track 090° to KUSSO, then on assigned transition. Maintain ATC assigned altitude, expect filed altitude 10 minutes after departure.

- BDDAY TRANSITION (KUSSO3.BDDAY)
- BSKAT TRANSITION (KUSSO3.BSKAT)
- FORCK TRANSITION (KUSSO3.FORCK)
- LOOSE TRANSITION (KUSSO3.LOOSE)
- MRSSH TRANSITION (KUSSO3.MRSSH)
- ZALEA TRANSITION (KUSSO3.ZALEA)

SC-2, 11 JUN 2026 to 09 JUL 2026

SC-2, 11 JUN 2026 to 09 JUL 2026