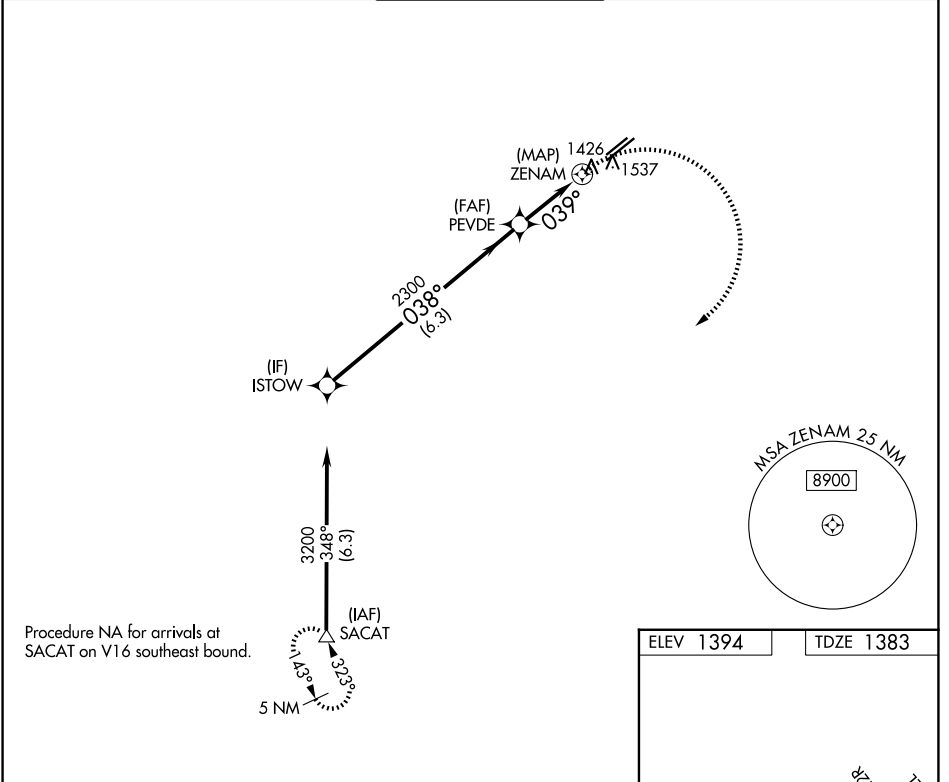


WAAS CH 56625 W04A	APP CRS 039°	Rwy Ldg TDZE Apt Elev	3799 1383 1394
--	------------------------	-----------------------------	---

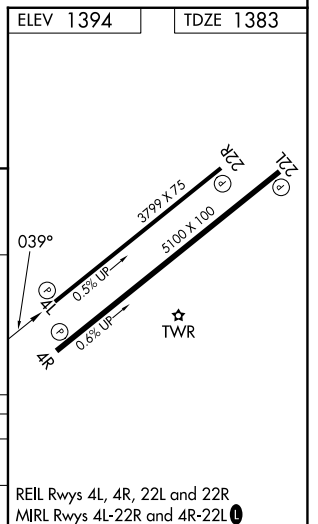
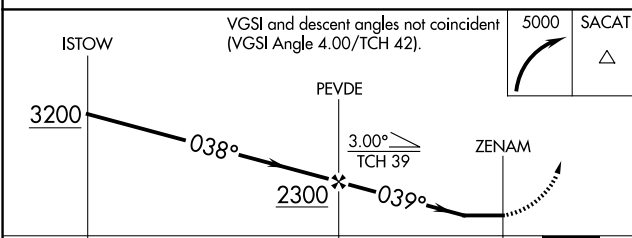
RNAV (GPS) RWY 4L

FALCON FLD (F'F'Z)

RNP APCH - GPS.		MISSED APPROACH: Climbing right turn to 5000 direct SACAT and hold, continue climb-in-hold to 5000.		
▼ ▲ Rwy 4L helicopter visibility reduction below 1 SM NA.				
ATIS 118.25	PHOENIX APP CON 120.7 239.0	FALCON TOWER * 124.6 (CTAF) 0	GND CON 121.3	UNICOM 122.95



Procedure NA for arrivals at SACAT on V16 southeast bound.



		VGSi and descent angles not coincident (VGSi Angle 4.00/TCH 42).		5000	SACAT
				▲	
CATEGORY		A	B	C	D
LP MDA		1800-1	417 (500-1)	1800-1 1/8 417 (500-1 1/8)	NA
LNAV MDA		1800-1	417 (500-1)	1800-1 1/8 417 (500-1 1/8)	NA

REIL Rwy 4L, 4R, 22L and 22R
MIRL Rwy 4L-22R and 4R-22L

SW-4, 11 JUN 2026 to 09 JUL 2026

SW-4, 11 JUN 2026 to 09 JUL 2026