

WAAS CH 57920 W12A	APP CRS 114°	Rwy Ldg 4099 TDZE 961 Apt Elev 961
---------------------------------	------------------------	---

RNAV (GPS) RWY 12

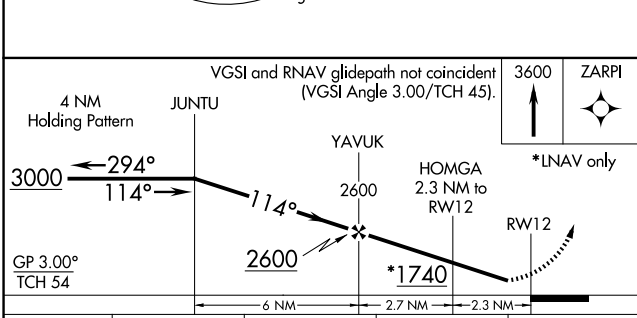
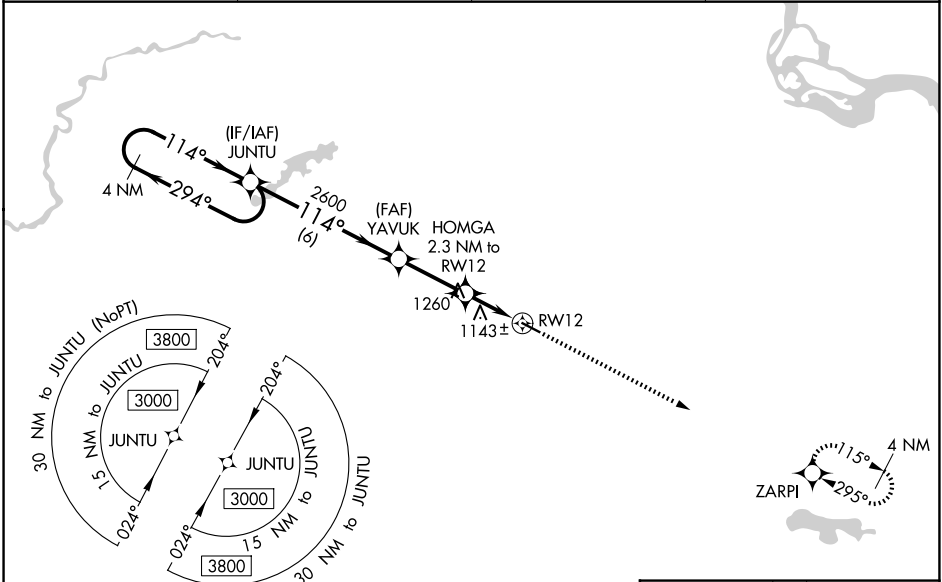
AIRLAKE (LVN)

RNP APCH.

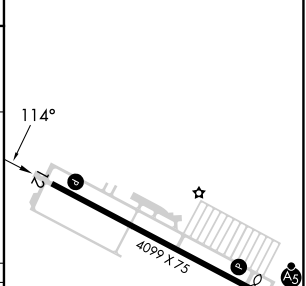
⚠ For uncompensated Baro-VNAV systems, LNAV/VNAV NA below -16°C (4°F) or above 54°C (130°F). Rwy 12 helicopter visibility reduction below 1 SM NA. Straight-in Rwy 12, Circling Rwy 12 at night, operational VGSI required, remain on or above VGSI glidepath until threshold.

MISSED APPROACH: Climb to 3600 direct ZARPI and hold.

AWOS-3 118.0	MINNEAPOLIS APP CON 134.7 284.7	CLNC DEL 118.95	UNICOM 123.05 (CTAF) 📻
------------------------	---	---------------------------	---



ELEV 961	D TDZE 961
----------	-------------------



CATEGORY	A	B	C	D
LPV DA	1211-1 250 (300-1)			
LNAV/VNAV DA	1270-1 309 (400-1)			
LNAV MDA	1400-1 439 (500-1)	1400-1¼ 439 (500-1¼)		
CIRCLING	1460-1 499 (500-1)	1660-2 699 (700-2)	1700-2¼ 739 (800-2¼)	

REIL Rwy 12 **📻**
HIRL Rwy 12-30 **📻**

NC-1, 11 JUN 2026 to 09 JUL 2026

NC-1, 11 JUN 2026 to 09 JUL 2026