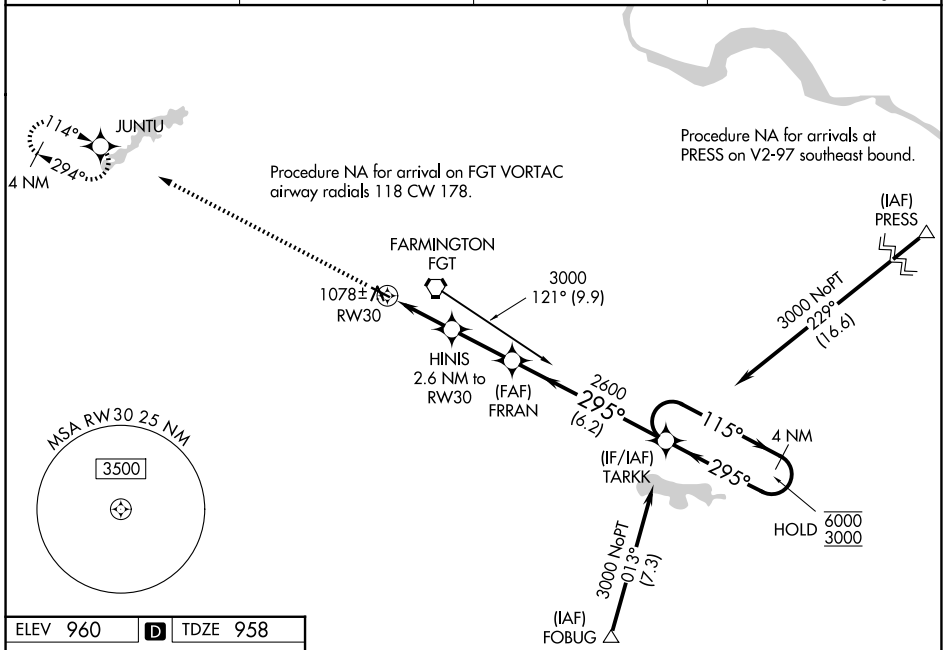


WAAS CH <b>99328</b> <b>W30A</b>	APP CRS <b>295°</b>	Rwy Ldg TDZE <b>958</b> Apt Elev <b>960</b>	<b>3707</b>
--	------------------------	---	-------------

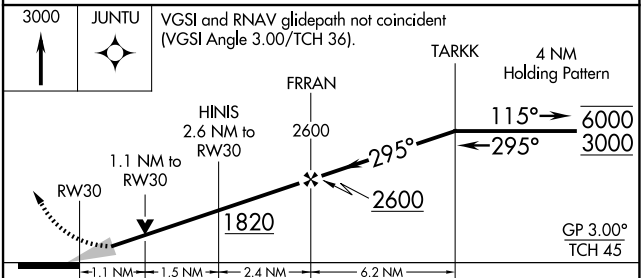
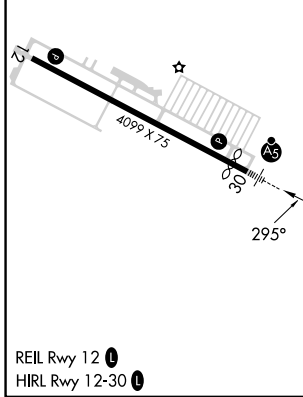
# RNAV (GPS) RWY 30

AIRLAKE (LVN)

RNP APCH - GPS.		MALSR	MISSED APPROACH: Climb to 3000 direct JUNTU and hold.
<p>⚠ Inop table does not apply to LPV. For uncompensated Baro-VNAV systems, LNAV/VNAV NA below -16°C or above 54°C. For inop ALS, increase LNAV/VNAV all Cats visibility to 1½ SM and LNAV visibility Cats A/B to 1 SM, Cats C/D visibility to 1½ SM.</p>			
AWOS-3 <b>118.0</b>	MINNEAPOLIS APP CON <b>134.7 284.7</b>	CLNC DEL <b>118.95</b>	UNICOM <b>123.05 (CTAF) 0</b>



ELEV 960	<b>D</b>	TDZE 958
----------	----------	----------



CATEGORY	A	B	C	D
LPV DA		1208-¾	250 (300-¾)	
LNAV/VNAV DA		1340-¾	382 (400-¾)	
LNAV MDA		1340-¾	382 (400-¾)	
CIRCLING	1480-1	520 (600-1)	1640-2 680 (700-2)	1700-2¼ 740 (800-2¼)

NC-1, 11 JUN 2026 to 09 JUL 2026

NC-1, 11 JUN 2026 to 09 JUL 2026