

HOUSTON DEP CON  
134.45 284.0  
CTAF  
122.7

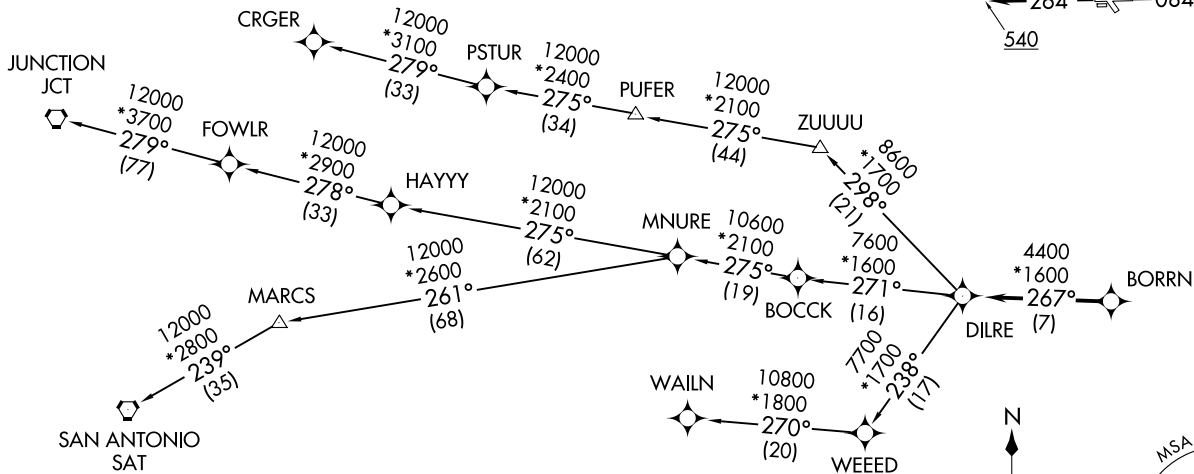
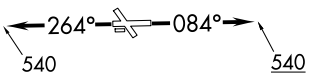
RNAV 1 - DME/DME/IRU or GPS.

RADAR required.

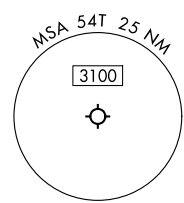
**TOP ALTITUDE:  
ASSIGNED BY ATC**

TAKEOFF MINIMUMS

Rwys 14, 32: NA - Environmental.  
Rwys 8, 26: Standard with minimum climb  
of 500'/NM to 540.



NOTE: CRGER-TRANSITION ATC assigned only  
for aircraft departing 54T, AXH, EFD, GLS,  
HPY, IWS, LBX, LVJ, SGR, TME, TØØ, T41.



NOTE: Chart not to scale.

(CONTINUED ON FOLLOWING PAGE)

BORRN SIX DEPARTURE (RNAV)  
(BORRN6.BORRN) 26134  
30NOV23

BAYTOWN, TEXAS  
RWJ AIRPARK (54T)

(BORRN6.BORRN) 26134  
BORRN SIX DEPARTURE (RNAV)

AL6674 (FAA)

RWJ AIRPARK (54T)  
BAYTOWN, TEXAS

# BORRN SIX DEPARTURE (RNAV)



## DEPARTURE ROUTE DESCRIPTION

TAKEOFF RUNWAY 8: Climb on heading 084° to 540, for RADAR vectors to BORRN, thence. . . .

TAKEOFF RUNWAY 26: Climb on heading 264° to 540, for RADAR vectors to BORRN, thence. . . .

. . . .on track 267° to DILRE, then on (transition). Maintain ATC assigned altitude. Expect filed altitude 10 minutes after departure.

CRGER TRANSITION (BORRN6.CRGER)

JUNCTION TRANSITION (BORRN6.JCT)

MNURE TRANSITION (BORRN6.MNURE)

SAN ANTONIO TRANSITION (BORRN6.SAT)

WAILN TRANSITION (BORRN6.WAILN)

SC-5, 11 JUN 2026 to 09 JUL 2026

SC-5, 11 JUN 2026 to 09 JUL 2026