

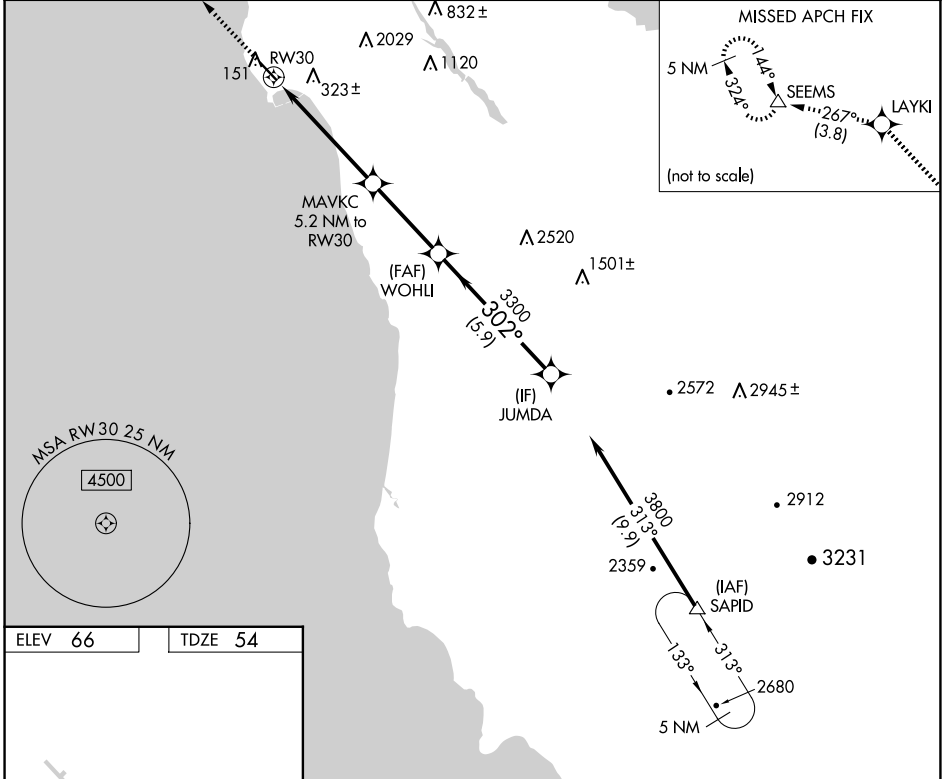
WAAS CH 50302 W30A	APP CRS 302°	Rwy Idg TDZE Apt Elev	4238 54 66
--	------------------------	-----------------------------	---------------------------------------

RNAV (GPS) RWY 30

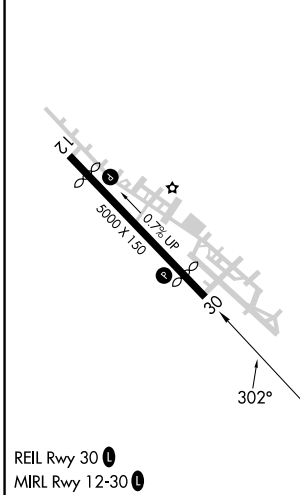
HALF MOON BAY (HAF')

RNP APCH. ▽	MISSED APPROACH: Climb to 4000 direct LAYKI and on track 267° to SEEMS and hold, continue climb-in-hold to 4000.
----------------	--

AWOS-3 127.275	NORCAL APP CON 135.1 307.2	UNICOM 122.8 (CTAF) 0
--------------------------	--------------------------------------	---------------------------------



ELEV 66	TDZE 54
---------	---------



4000	LAYKI	tr 267°	SEEMS	VGSi and RNAV glidepath not coincident (VGSi Angle 3.00/TCH 24).			
*LNAV only		MAVKC 5.2 NM to RW30		JUMDA			
RW30		1.8 NM to RW30		WOHLI	3300		3800
1.8 NM		3.4 NM		3.4 NM		5.9 NM	
CATEGORY		A		B		C	
LPV DA		381-1		327 (400-1)			
LNAV MDA		620-1 566 (600-1)		620-1½ 566 (600-1½)		GP 3.50° TCH 40	