

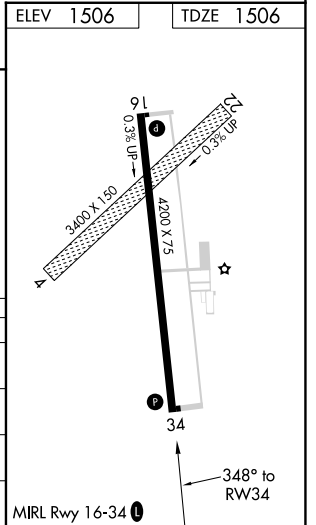
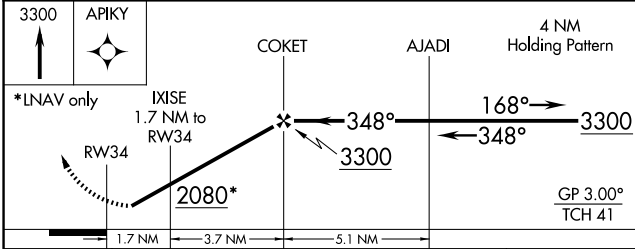
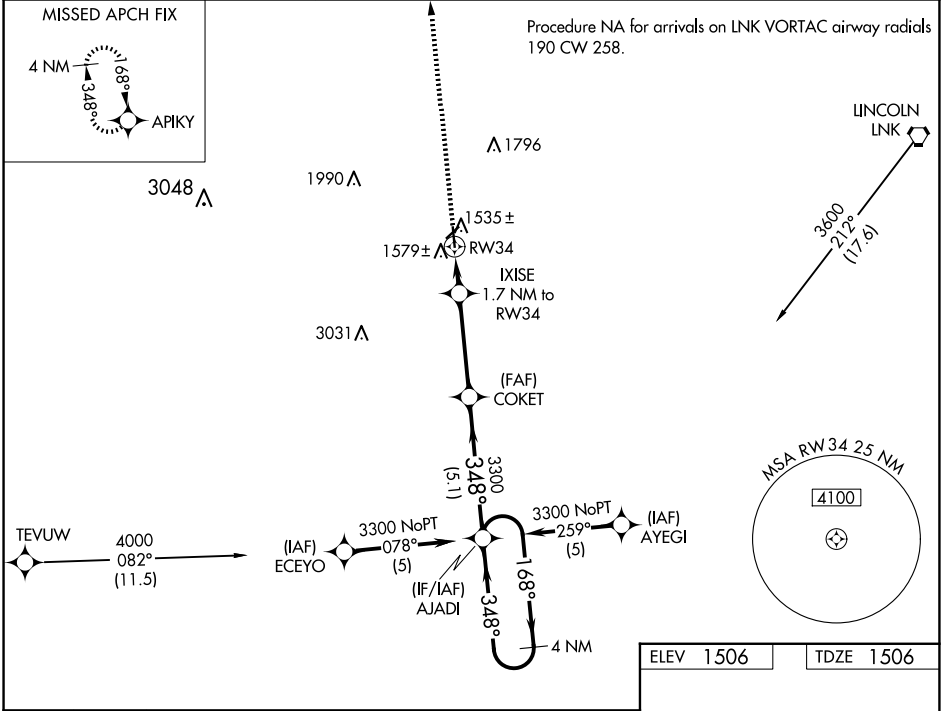
WAAS CH <b>82407</b> <b>W34A</b>	APP CRS <b>348°</b>	Rwy Idg TDZE Apt Elev	<b>4200</b> <b>1506</b> <b>1506</b>
--	------------------------	-----------------------------	---

# RNAV (GPS) RWY 34

SEWARD MUNI (SWT)

RNP APCH.	Baro-VNAV NA. Use Lincoln altimeter setting. Circling NA to Rwys 4 and 22.	MISSED APPROACH: Climb to 3300 direct APIKY and hold.
<b>NA</b>	Rwy 34 helicopter visibility reduction below 3/4 SM NA.	

LNK ASOS <b>118.05 290.9</b>	OMAHA APP CON <b>124.0 270.3</b>	UNICOM <b>122.8</b> (CTAF) <b>1</b>
---------------------------------	-------------------------------------	--



CATEGORY	A	B	C	D
LPV DA	1833-1¼	327 (400-1¼)		NA
LNAV/VNAV DA	1926-1½	420 (500-1½)		NA
LNAV MDA	1960-1	454 (500-1)		NA
CIRCLING	2020-1	514 (600-1)		NA

NC-2, 11 JUN 2026 to 09 JUL 2026

NC-2, 11 JUN 2026 to 09 JUL 2026