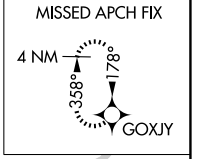
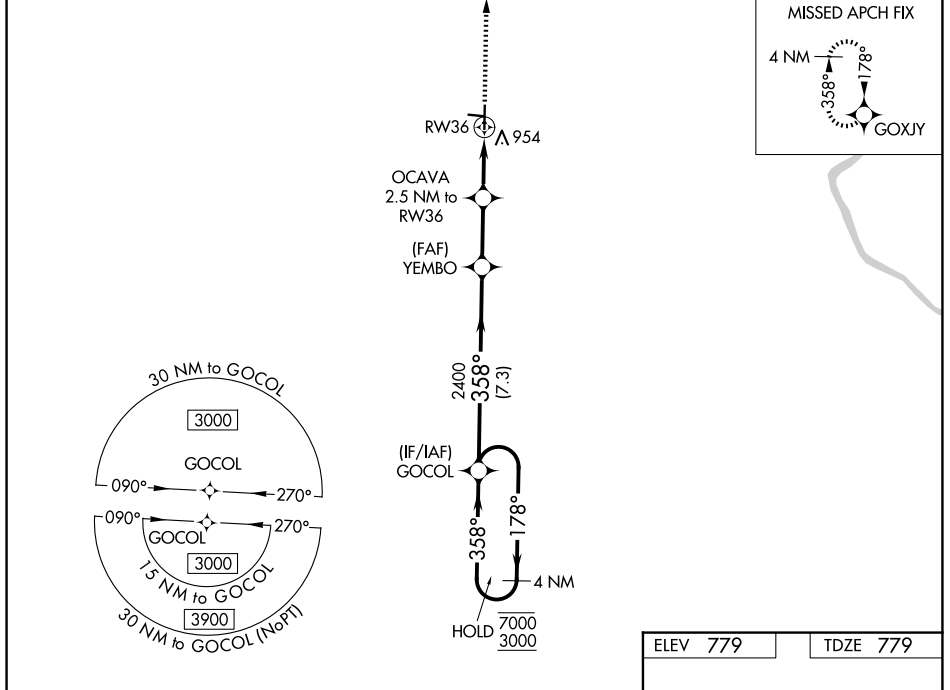


WAAS CH <b>93907</b> <b>W36A</b>	APP CRS <b>358°</b>	Rwy Ldg TDZE <b>779</b> Apt Elev <b>779</b>
--	------------------------	---

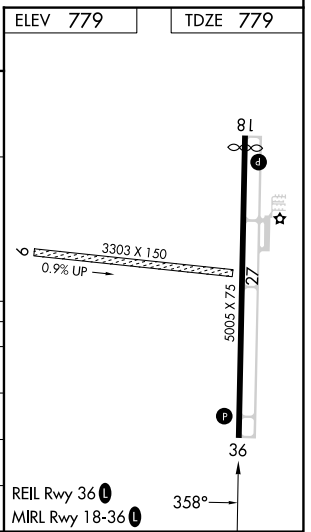
# RNAV (GPS) RWY 36

MARSHALL MEML MUNI (MHL)

RNP APCH - GPS. ▼ Circling NA to Rwys 9 and 27. For uncompensated Baro-VNAV systems, LNAV/VNAV NA below -16°C or above 54°C.	MISSED APPROACH: Climb to 3000 direct GOXJY and hold.	
AWOS-3PT <b>118.675</b>	WHITEMAN APP CON * <b>127.45</b>	UNICOM <b>122.8 (CTAF)</b>



4 NM Holding Pattern	VGSI and RNAV glidepath not coincident (VGSI Angle 3.04/TCH 36).		3000	GOXJY
	7000 ← 178°	3000 → 358°	2400	1600
GP 3.00° TCH 40	7.3 NM	2.5 NM	1.4	1.1
CATEGORY	A	B	C	D
LPV DA		1029-1 250 (300-1)		NA
LNAV/VNAV DA		1104-1 325 (400-1)		NA
LNAV MDA	1180-1 401 (500-1)		1180-1 1/8 401 (500-1 1/8)	NA
CIRCLING	1260-1 481 (500-1)		1480-2 701 (800-2)	NA



NC-3, 11 JUN 2026 to 09 JUL 2026

NC-3, 11 JUN 2026 to 09 JUL 2026