

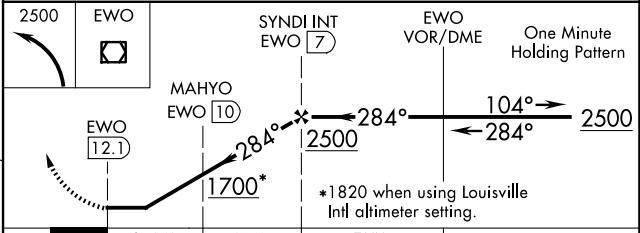
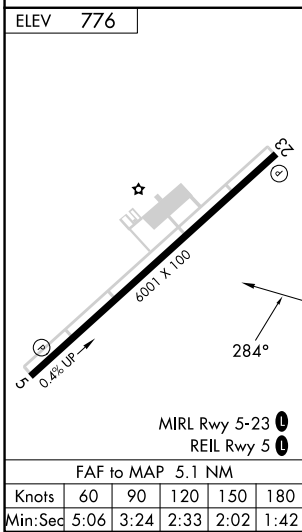
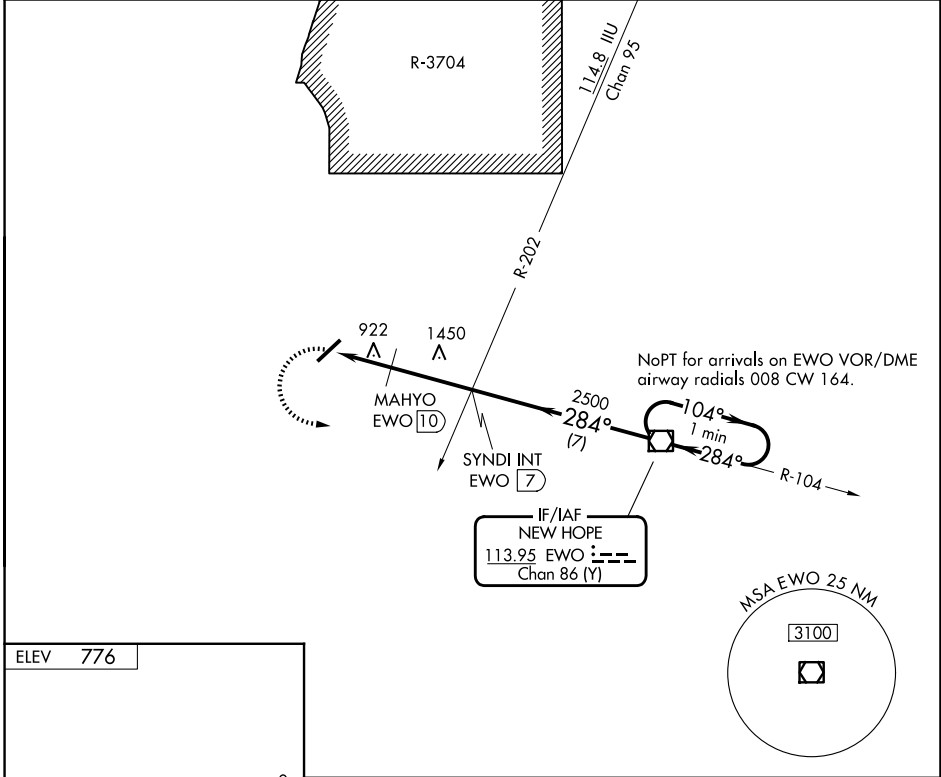
VOR/DME EWO 113.95 Chan 86 (Y)	APP CRS 284°	Rwy Ldg TDZE Apt Elev	N/A N/A 776
--	------------------------	-----------------------------	--

VOR-A
ADDINGTON FLD (EKK)

NA When local altimeter setting not received, use Bardstown altimeter setting: increase all MDAs 80 feet and visibility Cat B and Cat C ¼ SM; MAHYO fix minimums: increase visibility Cat C ¼ SM.

MISSED APPROACH: Climbing left turn to 2500 direct to EWO VOR/DME and hold.

AWOS-3 118.55	LOUISVILLE APP CON 123.675 327.0	CLNC DEL 119.45	UNICOM 123.075 (CTAF) 0
-------------------------	--	---------------------------	--



CATEGORY	A	B	C	D
CIRCLING	1700-1¼ 924 (1000-1¼)		1700-2¾ 924 (1000-2¾)	1760-3 984 (1000-3)
MAHYO FIX MINIMUMS				
CIRCLING	1240-1 464 (500-1)	1260-1 484 (500-1)	1420-1¾ 644 (700-1¾)	1760-3 984 (1000-3)

SE-1, 11 JUN 2026 to 09 JUL 2026

SE-1, 11 JUN 2026 to 09 JUL 2026