

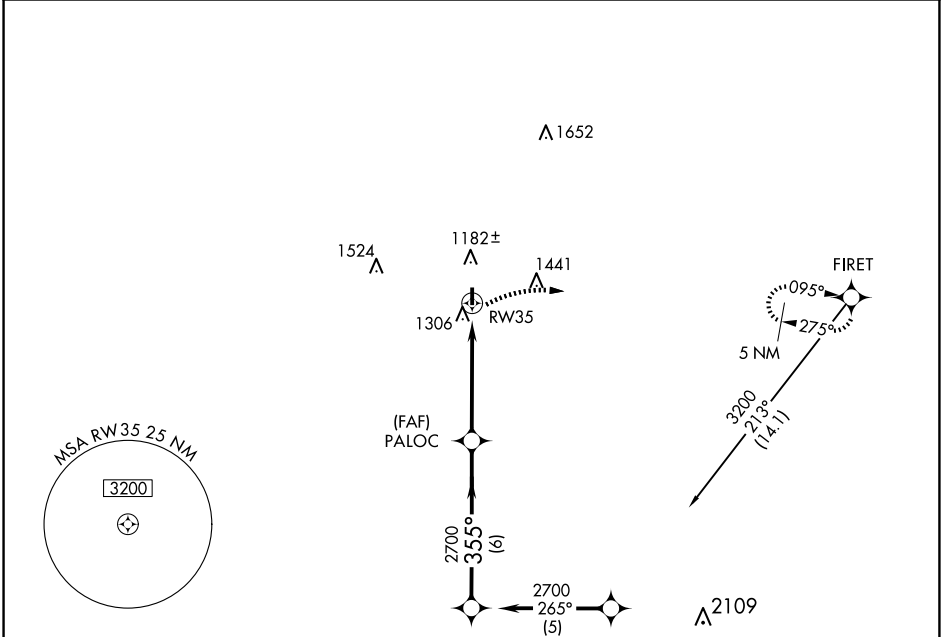
APP CRS 355°	Rwy Idg TDZE Apt Elev	3007 1085 1092
------------------------	-----------------------------	---

RNAV (GPS) RWY 35

MEDFORD MUNI (O53)

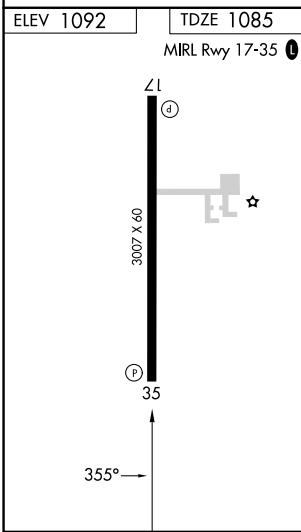
RNP APCH.	MISSED APPROACH: Climbing right turn to 5000 direct FIRET and hold.
▲ NA Use Ponca City Rgnl altimeter setting. Procedure NA at night.	

PNC ASOS 134.075	VANCE APP CON* 118.075 273.475	UNICOM 122.8 (CTAF)
----------------------------	--	-------------------------------



SC-1, 11 JUN 2026 to 09 JUL 2026

SC-1, 11 JUN 2026 to 09 JUL 2026



5000	FIRET	PALOC	INERE	Procedure Turn NA
		2700	2700	
	RW35	355°	355°	
		≤ 3.00°		VGSI and descent angles not coincident (VGSI Angle 3.51/TCH 33).
		4.9 NM	6 NM	
CATEGORY	A	B	C	D
LNAV MDA	1700-1¼	608 (700-1¼)	NA	
CIRCLING	1740-1¼ 648 (700-1¼)	1840-1¼ 748 (800-1¼)	NA	