

| | | |
|---------|----------|------|
| APP CRS | Rwy Ldg | N/A |
| 050° | TDZE | N/A |
| | Apt Elev | 7411 |

RNAV (GPS)-B

MC ELROY AIRFIELD (20V)

RNP APCH.

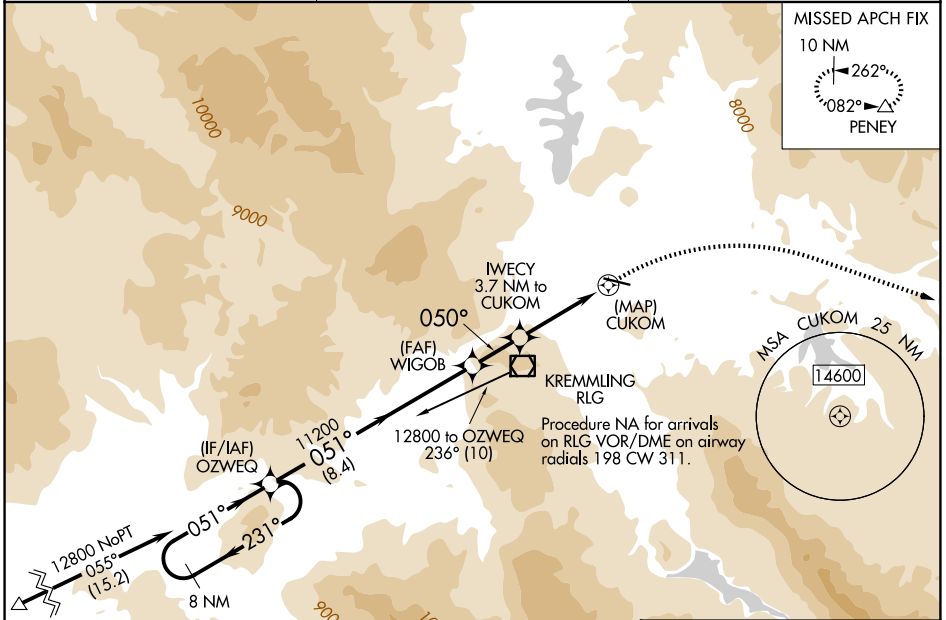
- When local altimeter setting not received, procedure NA.
- Night Landing Rwy 9 NA. Circling NA south of Rwy 9-27.
- 18°C

MISSED APPROACH: Climbing right turn to 15600 direct PENNY and hold, continue climb-in-hold to 15600.

AWOS-3
118.425

DENVER CENTER
128.65 282.2

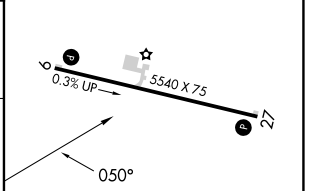
UNICOM
122.8 (CTAF) 0



SW-1, 11 JUN 2026 to 09 JUL 2026

SW-1, 11 JUN 2026 to 09 JUL 2026

ELEV 7411



| | | | | |
|----------------------|--------|-------|----------------------|-------|
| 8 NM Holding Pattern | OZWEG | WIGOB | IWCY 3.7 NM to CUKOM | CUKOM |
| 12800 | 11200 | 9880 | | |
| | 8.4 NM | 2 NM | 3.7 NM | |

| | | | | |
|----------|---------------------------|---------------------------|-------------------------|----|
| CATEGORY | A | B | C | D |
| CIRCLING | 9440-1¼ 2029 (2100-1¼) | 9440-1½ 2029 (2100-1½) | 9440-3 2029 (2100-3) | NA |

REIL Rwys 9 and 27 0
MIRL Rwy 9-27 0