

APP CRS	Rwy Idg	3201
052°	TDZE	84
	Apt Elev	85

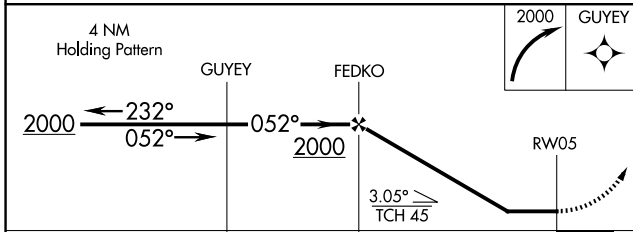
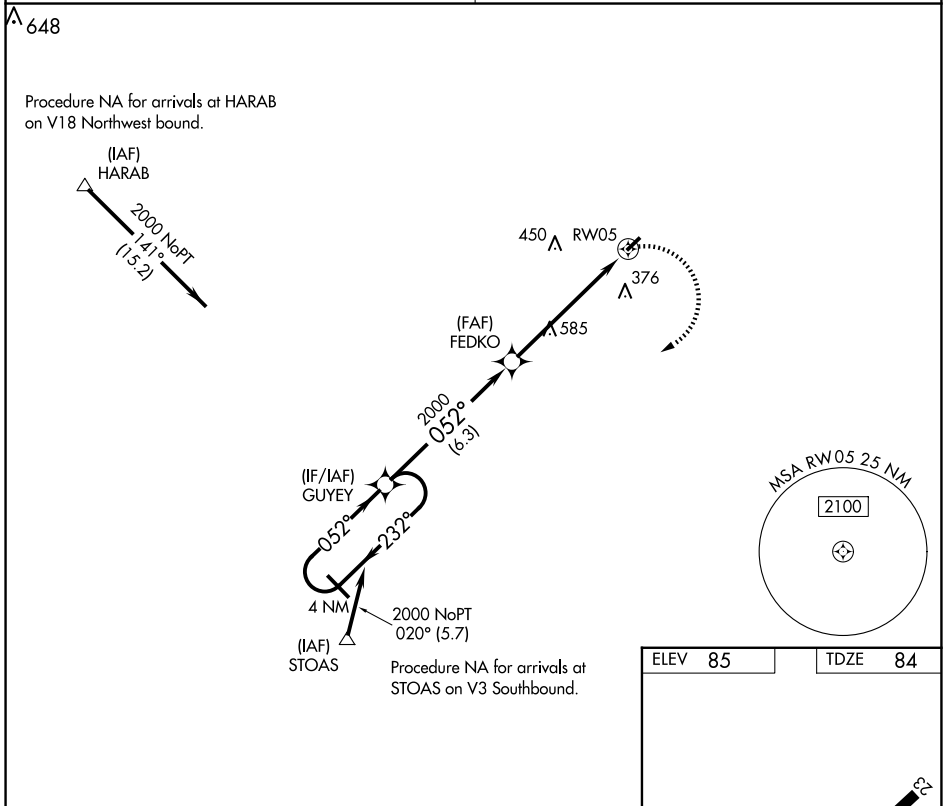
RNAV (GPS) RWY 5

ST GEORGE (6J2)

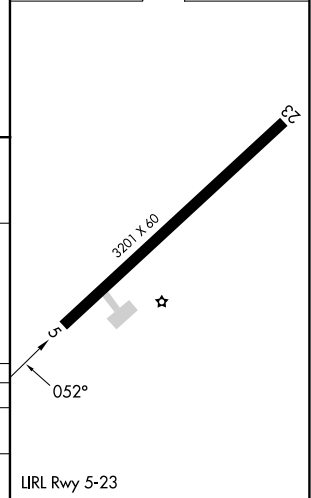
▼ DME/DME RNP-0.3 NA. Helicopter visibility reduction below 1 SM NA. Use Summerville altimeter setting; when not received, use Charleston altimeter setting and increase all MDAs 40 feet, increase LNAV and Circling Cat C visibility ¼ mile, increase LNAV and Circling Cat D visibility ½ mile. Procedure NA at night.

▲ NA MISSED APPROACH: Climbing right turn to 2000 direct GUYEY and hold.

CHARLESTON APP CON 120.7 306.925	UNICOM 122.8 (CTAF)
--	-------------------------------



ELEV 85	TDZE 84
---------	---------



CATEGORY	A	B	C	D
LNAV MDA	940-1¼ 856 (900-1¼)	940-2½ 856 (900-2½)	940-2¾ 856 (900-2¾)	940-2¾ 856 (900-2¾)
CIRCLING	940-1¼ 855 (900-1¼)	940-2½ 855 (900-2½)	940-2¾ 855 (900-2¾)	940-2¾ 855 (900-2¾)

SE-2, 11 JUN 2026 to 09 JUL 2026

SE-2, 11 JUN 2026 to 09 JUL 2026