

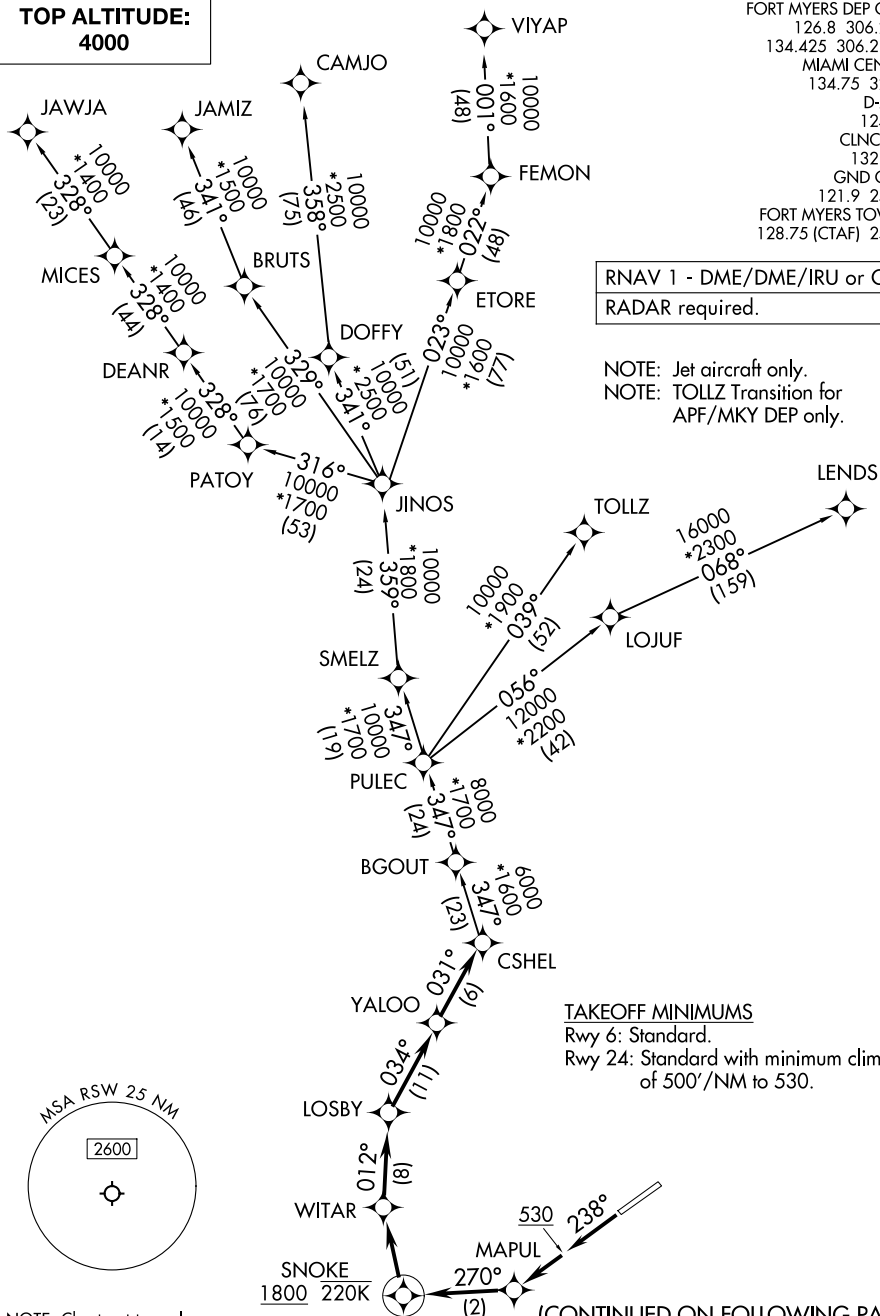
# CSHEL EIGHT DEPARTURE (RNAV)

**TOP ALTITUDE:  
4000**

FORT MYERS DEP CON ★  
 126.8 306.2 (6)  
 134.425 306.2 (24)  
 MIAMI CENTER  
 134.75 322.5  
 D-ATIS  
 124.65  
 CLNC DEL  
 132.075  
 GND CON  
 121.9 257.8  
 FORT MYERS TOWER ★  
 128.75 (CTAF) 257.8

RNAV 1 - DME/DME/IRU or GPS.  
 RADAR required.

NOTE: Jet aircraft only.  
 NOTE: TOLLZ Transition for  
 APF/MKY DEP only.



**TAKEOFF MINIMUMS**  
 Rwy 6: Standard.  
 Rwy 24: Standard with minimum climb  
 of 500'/NM to 530.

NOTE: Chart not to scale.

(CONTINUED ON FOLLOWING PAGE)

# CSHEL EIGHT DEPARTURE (RNAV)

# CSHEL EIGHT DEPARTURE (RNAV)



## DEPARTURE ROUTE DESCRIPTION

TAKEOFF RUNWAY 6: Climb on assigned heading for vectors to CSHEL on assigned transition. Maintain 4000. Expect filed altitude 10 minutes after departure.

TAKEOFF RUNWAY 24: Climb on heading 238° to 530, then continue climb direct MAPUL, then on track 270° to cross SNOKE at or above 1800 and at or below 220K, then right turn direct WITAR, then on track 012° to LOSBY, then on track 034° to YALOO, then on track 031° to CSHEL, thence. . .

. . .on assigned transition. Maintain 4000. Expect filed altitude 10 minutes after departure.

CAMJO TRANSITION (CSHEL8.CAMJO)

JAMIZ TRANSITION (CSHEL8.JAMIZ)

JAWJA TRANSITION (CSHEL8.JAWJA)

LENDZ TRANSITION (CSHEL8.LENDZ)

TOLLZ TRANSITION (CSHEL8.TOLLZ)

VIYAP TRANSITION (CSHEL8.VIYAP)

SE-3, 11 JUN 2026 to 09 JUL 2026

SE-3, 11 JUN 2026 to 09 JUL 2026