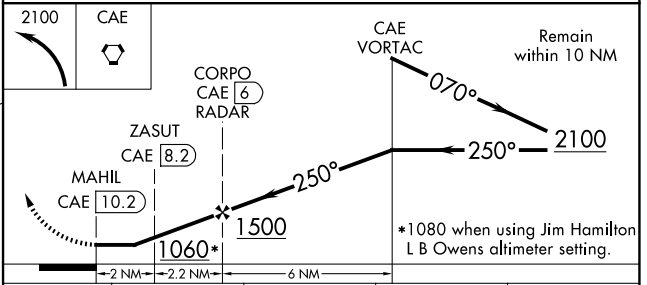
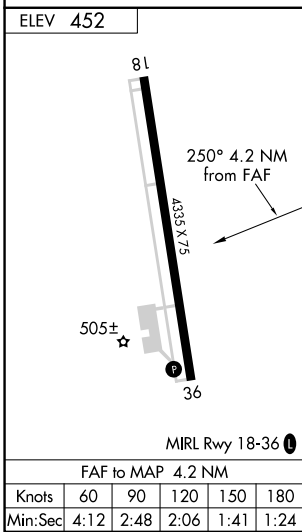
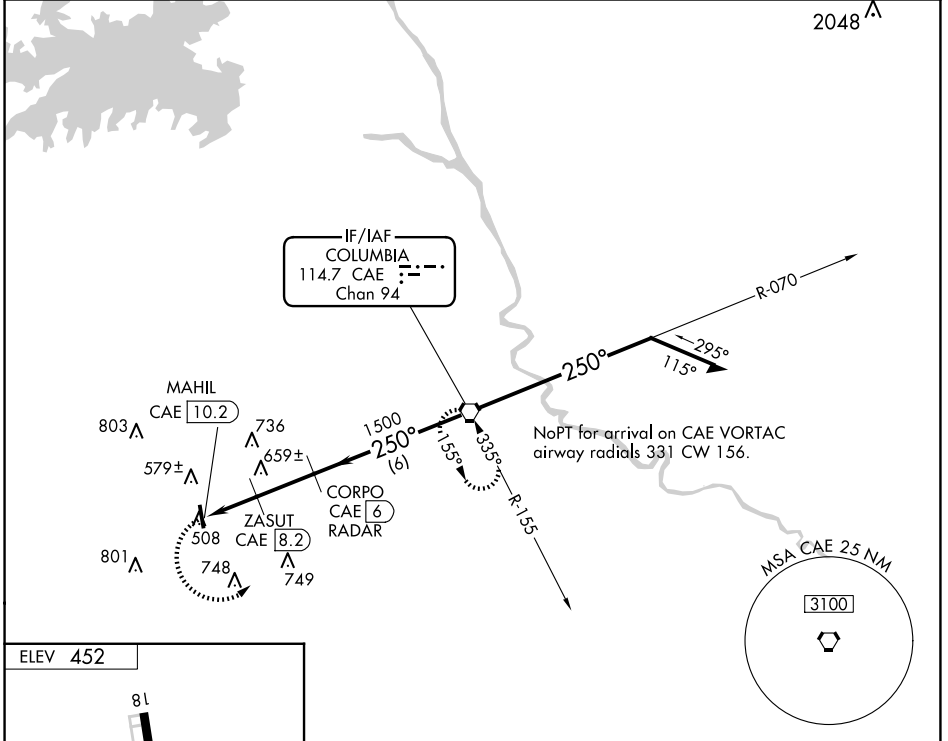


VORTAC CAE 114.7 Chan 94	APP CRS 250°	Rwy Idg TDZE Apt Elev	N/A N/A 452
--	------------------------	-----------------------------	--

VOR-A
LEXINGTON COUNTY (6J0)

DME or RADAR required.		MISSED APPROACH: Climbing left turn to 2100 direct CAE VORTAC and hold.
Use Columbia Metro altimeter setting; when not received, use Jim Hamilton L B Owens altimeter setting and increase all MDA 20 feet.		
CAE ASOS 120.15	COLUMBIA APP CON 124.15 338.2	UNICOM 123.0 (CTAF) 0



CATEGORY	A		B		C	D
CIRCLING	1060-1		608 (700-1)		NA	
ZASUT FIX MINIMUMS						
CIRCLING	980-1 528 (600-1)		1060-1 608 (700-1)		NA	

SE-2, 11 JUN 2026 to 09 JUL 2026

SE-2, 11 JUN 2026 to 09 JUL 2026