

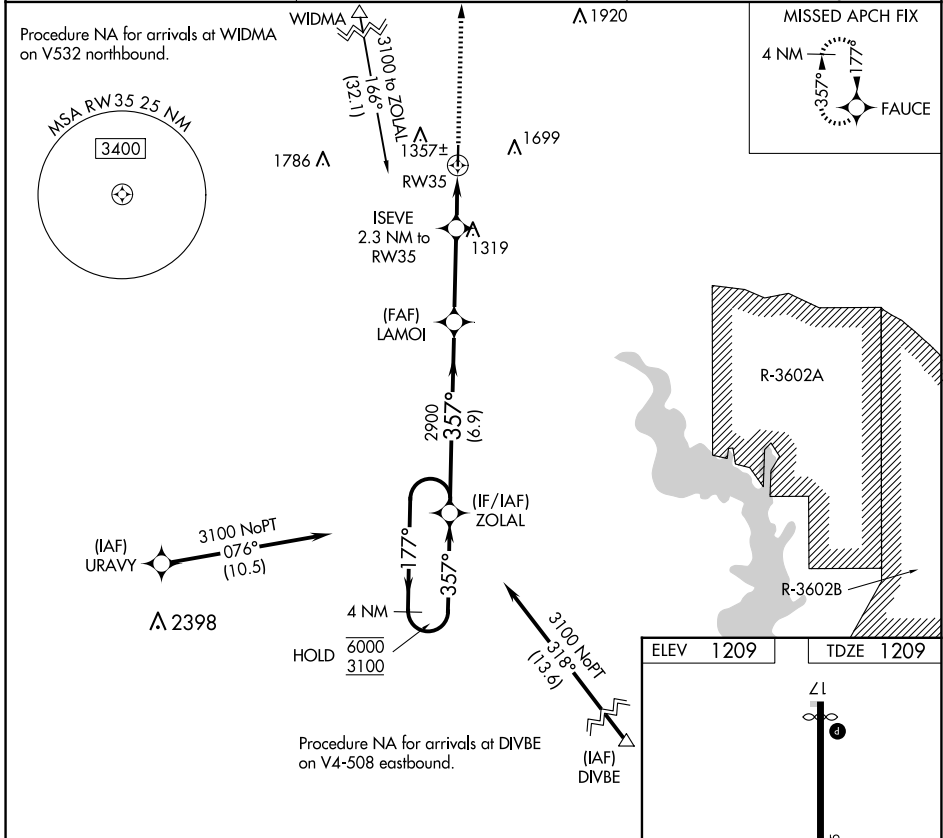
APP CRS	Rwy Idg	3970
357°	TDZE	1209
	Apt Elev	1209

RNAV (GPS) RWY 35

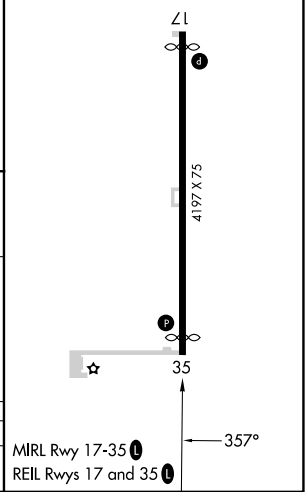
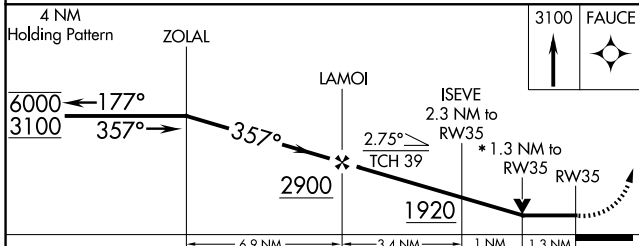
CLAY CENTER MUNI (CYW)

RNP APCH.		MISSED APPROACH: Climb to 3100 direct FAUCE and hold.
<p>NA Rwy 35 helicopter visibility reduction below $\frac{3}{4}$ SM NA. VDP NA when using Salina altimeter setting. When local altimeter setting not received, use Salina altimeter setting and increase all MDA 120 feet and LNAV Cat C visibility $\frac{3}{8}$ SM.</p>		

AWOS-3T 119.95	MARSHALL AAF GCA* 121.25 269.05	UNICOM 122.8 (CTAF)
--------------------------	---	-------------------------------



ELEV	1209	TDZE	1209
------	------	------	------



CATEGORY	A	B	C	D
LNAV MDA	1580-1	371 (400-1)		NA

NC-2, 11 JUN 2026 to 09 JUL 2026

NC-2, 11 JUN 2026 to 09 JUL 2026