

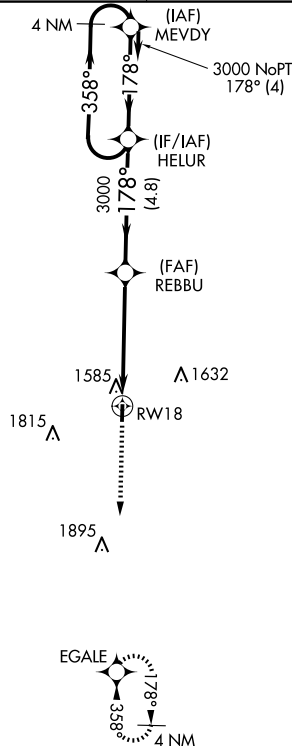
WAAS CH 58025 W18A	APP CRS 178°	Rwy Idg TDZE Apt Elev	3001 1434 1434
--	------------------------	-----------------------------	---

RNAV (GPS) RWY 18
JERRY SUMNERS SR AURORA MUNI (2H2)

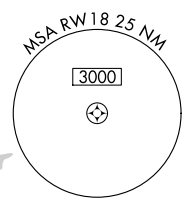
RNP APCH. Use Springfield altimeter setting; when not received, use Branson altimeter setting and increase all MDA 40 feet. Circling Rwy 36 NA at night. Rwy 18 helicopter visibility reduction below 3/4 SM NA. MISSED APPROACH: Climb to 3100 direct EGALE and hold.

SPRINGFIELD APP CON
124.95 318.2

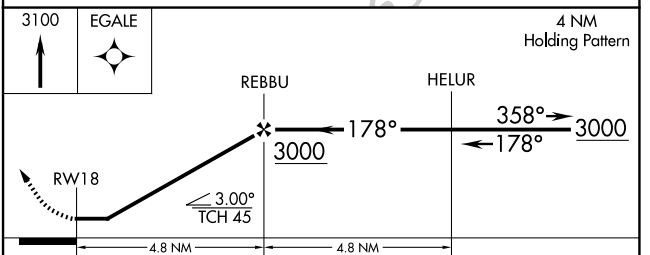
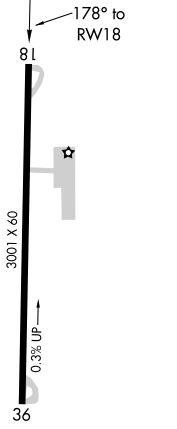
UNICOM
122.8 (CTAF)



Procedure NA for arrivals at MEVDY on V14 northeast bound.



ELEV 1434	TDZE 1434
-----------	-----------



CATEGORY	A	B	C	D
LP MDA	1940-1	506 (600-1)		NA
LNAV MDA	1940-1	506 (600-1)		NA
CIRCLING	1980-1 546 (600-1)	2080-1 646 (700-1)		NA

MIRL Rwy 18-36
AURORA, MISSOURI
Orig-C 30DEC21

36°58'N-93°42'W

JERRY SUMNERS SR AURORA MUNI (2H2)
RNAV (GPS) RWY 18

NC-3, 11 JUN 2026 to 09 JUL 2026

NC-3, 11 JUN 2026 to 09 JUL 2026