

VORTAC SGF 116.9 Chan 116	APP CRS 305°	Rwy Idg TDZE Apt Elev N/A N/A 1042
---	------------------------	--

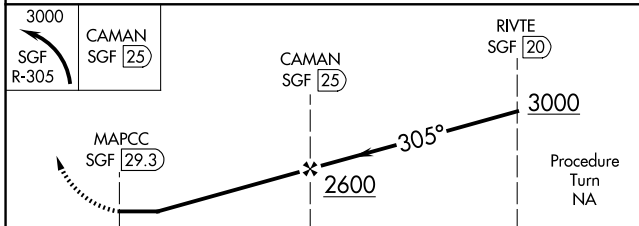
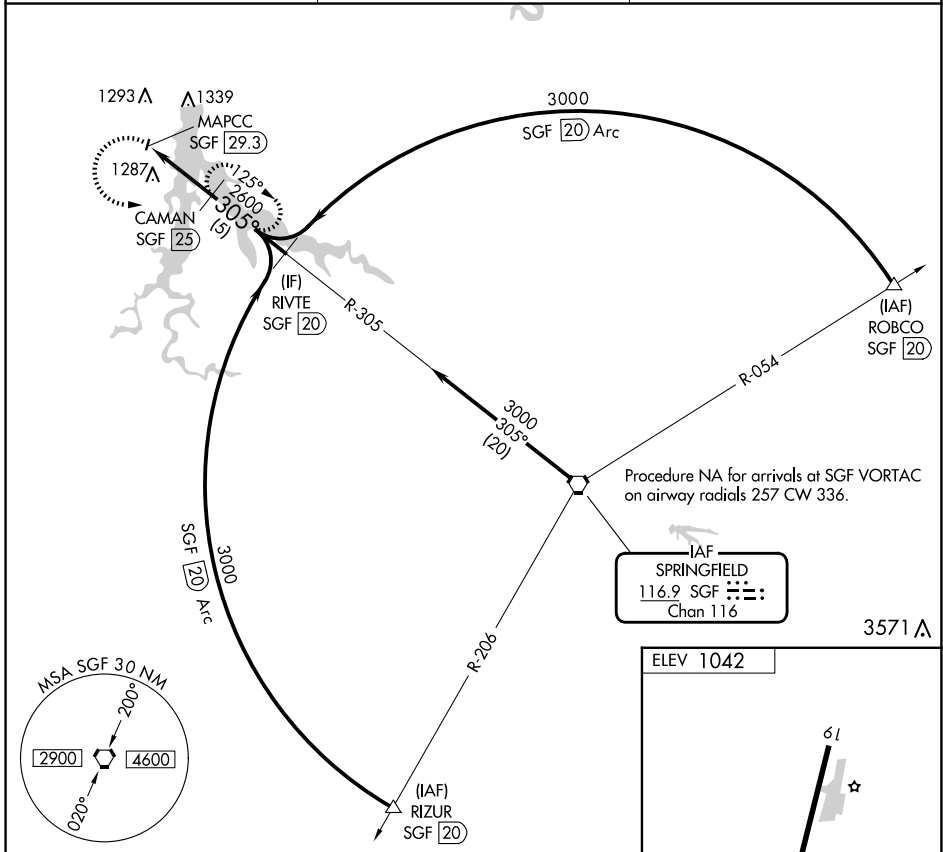
VOR/DME-A

STOCKTON LAKE (MO3)

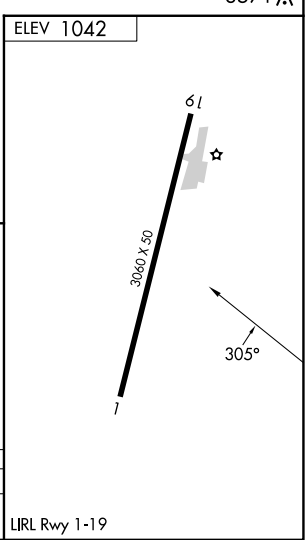
NA Use Nevada altimeter setting; when not received, use Springfield altimeter setting and increase all MDA 20 feet. Procedure NA at night. Helicopter visibility reduction below 1 SM NA.

MISSED APPROACH: Climbing left turn to 3000 on SGF VORTAC R-305 to CAMAN/25 DME and hold.

NVD AWOS-3PT 119.175	SPRINGFIELD APP CON 124.95	CTAF 122.9
--------------------------------	--------------------------------------	----------------------



CATEGORY	A	B	C	D
CIRCLING	1620-1 578 (600-1)	1700-1¼ 658 (700-1¼)	NA	



NC-3, 11 JUN 2026 to 09 JUL 2026

NC-3, 11 JUN 2026 to 09 JUL 2026

LIRL Rwy 1-19