

APP CRS	Rwy Ldg	2805
346°	TDZE	208
	Apt Elev	208

RNAV (GPS) RWY 34

LINCOLN RGNL (L.R.G)

RNP APCH - GPS.

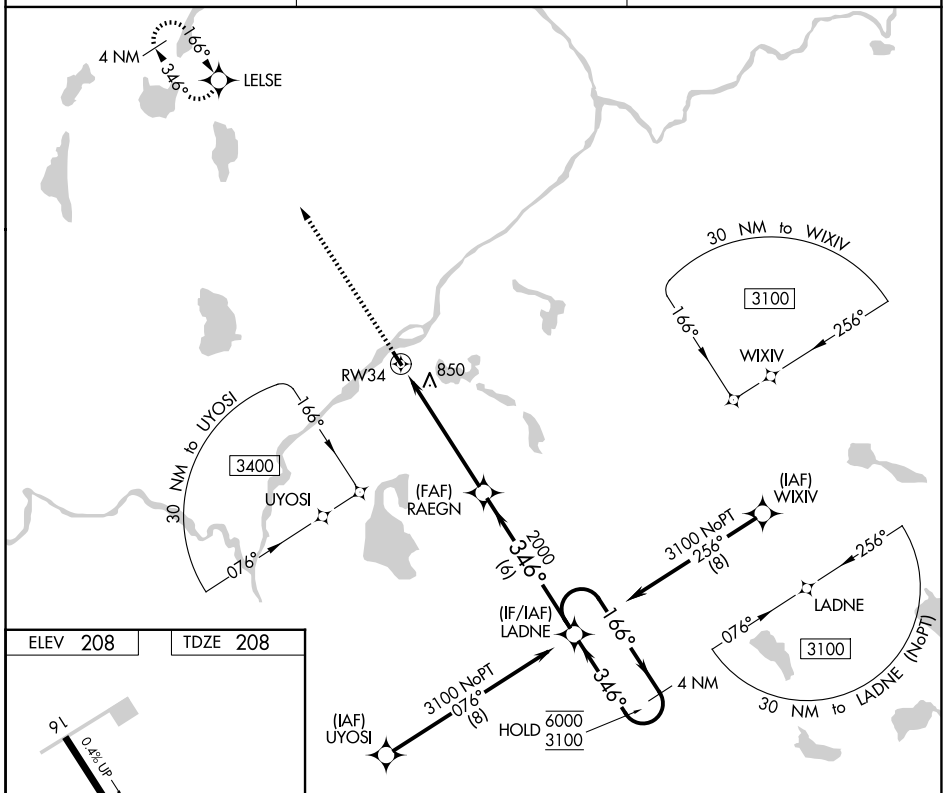
NA Procedure NA at night. Rwy 34 helicopter visibility reduction below 1 SM NA.
NA Circling NA to Rwy's 6W and 24W. Use MLT altimeter setting; when not received, use BGR altimeter setting and increase all MDAs 20 feet.

MISSED APPROACH:
 Climb to 2800 direct LEISE and hold.

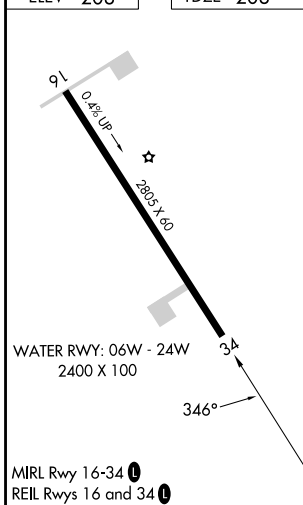
MLT ASOS
135.225

BOSTON CENTER
124.25 290.5

UNICOM
122.8 (CTAF) 0



ELEV 208	TDZE 208
----------	----------



MIRL Rwy 16-34 **0**
 REIL Rwy's 16 and 34 **0**

2800	LEISE	Visual Segment - Obstacles.	LADNE	4 NM Holding Pattern
↑	✧			
		RAEGN		
		RW34		
		2000		
		5.5 NM	6 NM	
CATEGORY	A	B	C	D
LNAV MDA	1180-1¼ 972 (1000-1¼)	1180-1½ 972 (1000-1½)		NA
CIRCLING	1240-1¼ 1032 (1100-1¼)	1240-1½ 1032 (1100-1½)		NA

NE-1, 11 JUN 2026 to 09 JUL 2026

NE-1, 11 JUN 2026 to 09 JUL 2026