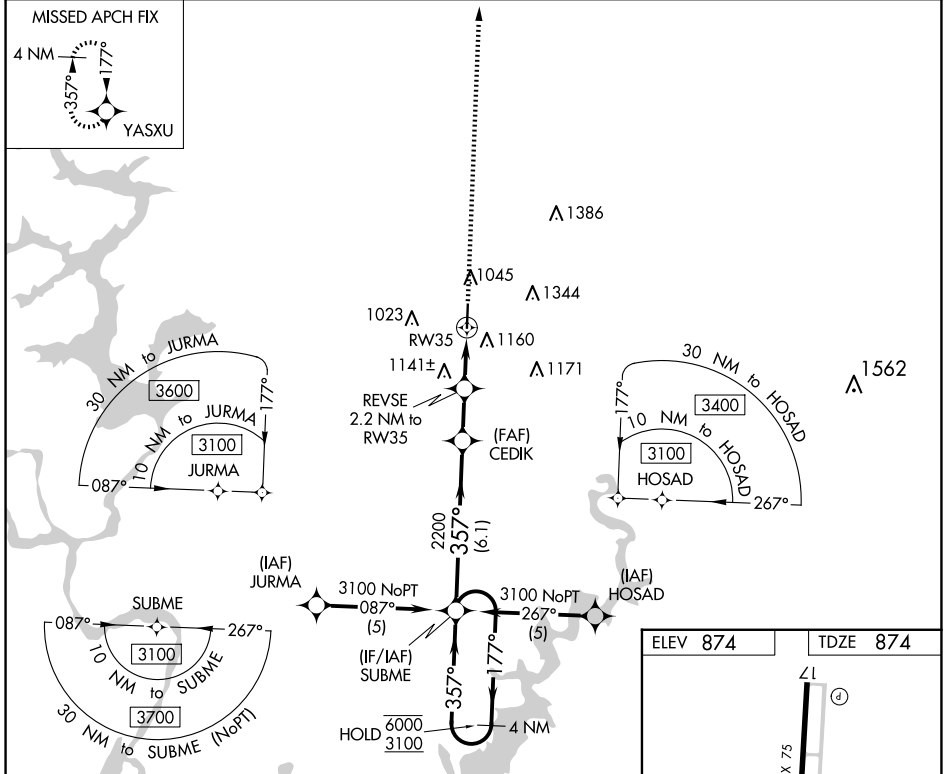


WAAS CH 90207 W35A	APP CRS 357°	Rwy ldg 5001 TDZE 874 Apt Elev 874
--	------------------------	---

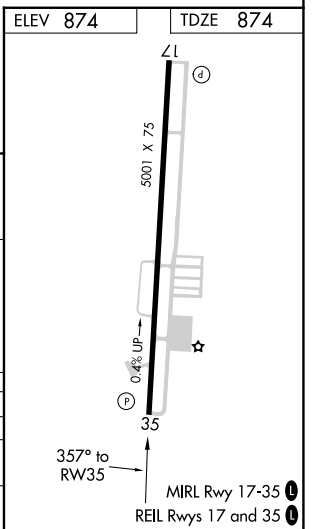
RNAV (GPS) RWY 35

TAHLEQUAH MUNI (TQH)

RNP APCH.		MISSED APPROACH: Climb to 3000 direct YASXU and hold.
AWOS-3P 118.425	MEMPHIS CENTER 126.1 269.0	UNICOM 122.8 (CTAF) ①



4 NM Holding Pattern	SUBME	3000	YASXU
6000 ← 177°	3100 → 357°	2200	*LNAV only.
GP 3.00°	TCH 40	2200	*1580
← 6.1 NM		← 1.9 NM	0.6
← 1.6 NM		← 1.6 NM	
CATEGORY	A	B	C
LPV DA	1124-1	250 (300-1)	NA
LNAV MDA	1400-1	526 (600-1)	1400-1½ 526 (600-1½)
CIRCLING	1520-1	646 (700-1)	1780-2¾ 906 (1000-2¾)



SC-1, 11 JUN 2026 to 09 JUL 2026

SC-1, 11 JUN 2026 to 09 JUL 2026