

WAAS CH <b>50205</b> <b>W12A</b>	APP CRS <b>123°</b>	Rwy Ldg <b>5499</b> TDZE <b>241</b> Apt Elev <b>247</b>
--	------------------------	---

# RNAV (GPS) RWY 12

JOHN BELL WILLIAMS (J V W)

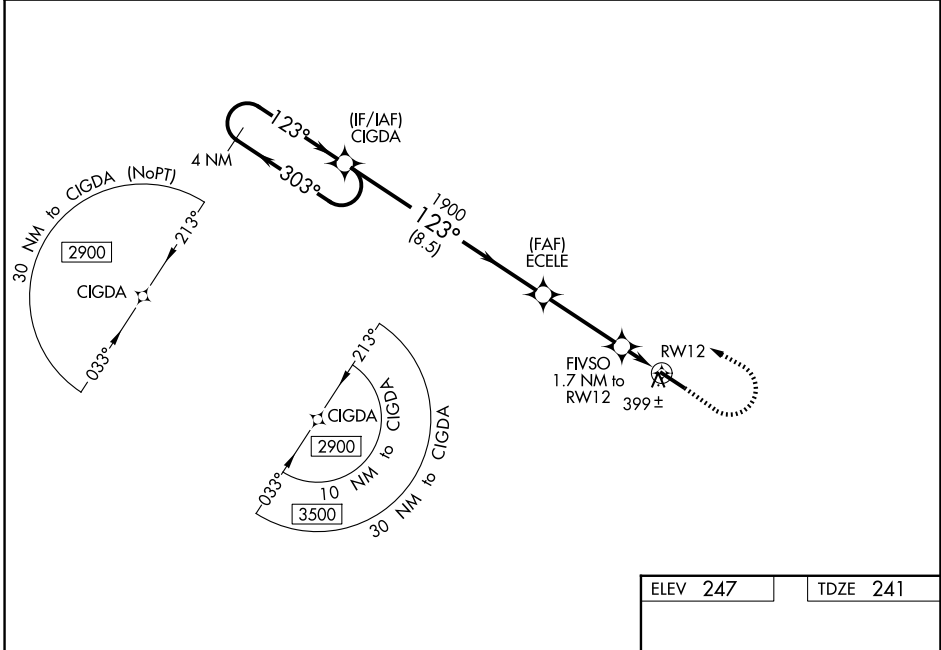
**⚠** For uncompensated Baro-VNAV systems, LNAV/VNAV NA below -15°C (5°F) or above 54°C (130°F). DME/DME RNP-0.3 NA. Circling NA for Cat D southwest of Rwy 12-30. Baro-VNAV and VDP NA when using Hawkins Fld altimeter setting. Helicopter visibility reduction below ¼ SM NA. When local altimeter setting not received, use Hawkins Fld altimeter setting: increase all DA 36 feet, all MDA 40 feet, all LNAV/VNAV visibilities ½ mile, LNAV Cat C and D visibilities ¼ mile, and Circling Cat C and D visibility ¼ mile.

**MISSED APPROACH:** Climb to 800 then climbing left turn to 2900 direct CIGDA and hold.

AWOS-3PT  
**118.675**

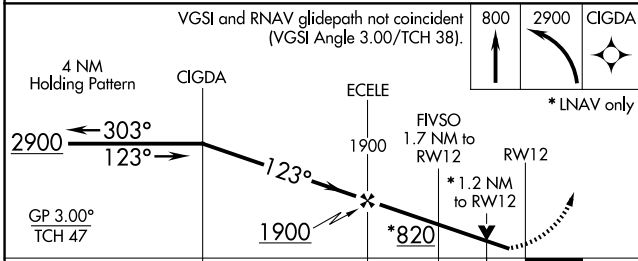
JACKSON APP CON\*  
**125.25 319.2**

UNICOM  
**123.0 (CTAF) 0**



SC-4, 11 JUN 2026 to 09 JUL 2026

SC-4, 11 JUN 2026 to 09 JUL 2026



ELEV 247	TDZE 241
----------	----------

CATEGORY	A	B	C	D
LPV DA		441-¾	200 (200-¾)	
LNAV/VNAV DA		662-1⅜	421 (500-1⅜)	
LNAV MDA	660-1	419 (500-1)	660-1⅜	419 (500-1⅜)
CIRCLING	800-1	553 (600-1)	980-2 733 (800-2)	980-2¼ 733 (800-2¼)

