

OKOLONA, MISSISSIPPI

AL-6780 (FAA)

26078

WAAS CH <b>99535</b> <b>W36A</b>	APP CRS <b>002°</b>	Rwy Ldg TDZE <b>337</b> Apt Elev <b>337</b>
--	------------------------	---

# RNAV (GPS) RWY 36

OKOLONA MUNI/RICHARD STOVALL FLD (5A4)

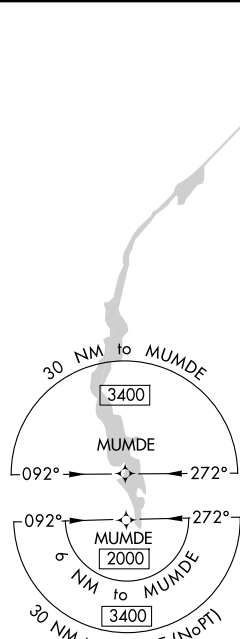
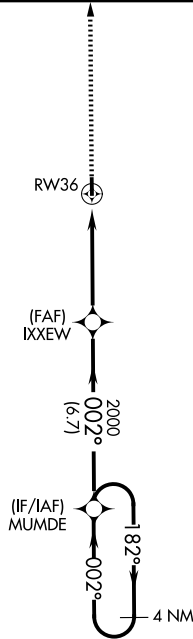
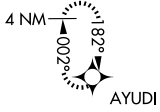
**Baro-VNAV NA.** DME/DME RNP-0.3 NA. Use Tupelo altimeter setting; when not received, use Columbus Air Force Base altimeter setting and increase all DA 41 feet and all MDA 60 feet; increase LNAV/VNAV all Cats visibility ¼ mile and LNAV Cat C visibility ¼ mile.  
Rwy 36 helicopter visibility reduction below ¾ SM NA.

**MISSED APPROACH:**  
Climb to 2600 direct AYUDI and hold.

COLUMBUS APP CON ★  
**126.075 229.15**

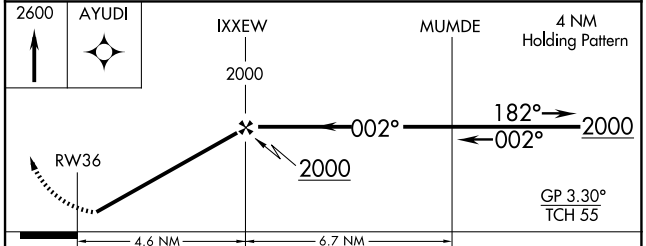
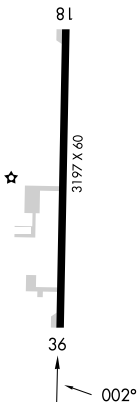
CTAF  
**122.9**

MISSED APCH FIX



ELEV 337 TDZE 337

MIRL Rwy 18-36



CATEGORY	A	B	C	D
LPV DA	624-1 287 (300-1)			NA
LNAV/VNAV DA	732-1½ 395 (400-1½)			NA
LNAV MDA	860-1 523 (600-1)	860-1½ 523 (600-1½)		NA
CIRCLING	920-1 583 (600-1)	1080-2¼ 743 (800-2¼)		NA

OKOLONA, MISSISSIPPI  
Amdt 1A 15SEP16

34°01'N-88°44'W

# OKOLONA MUNI/RICHARD STOVALL FLD (5A4) RNAV (GPS) RWY 36

SC-4, 11 JUN 2026 to 09 JUL 2026

SC-4, 11 JUN 2026 to 09 JUL 2026