

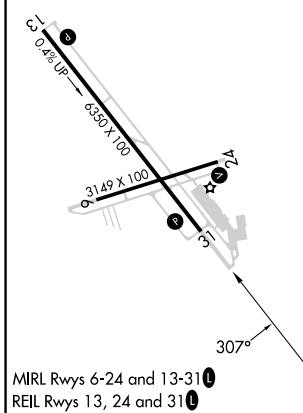
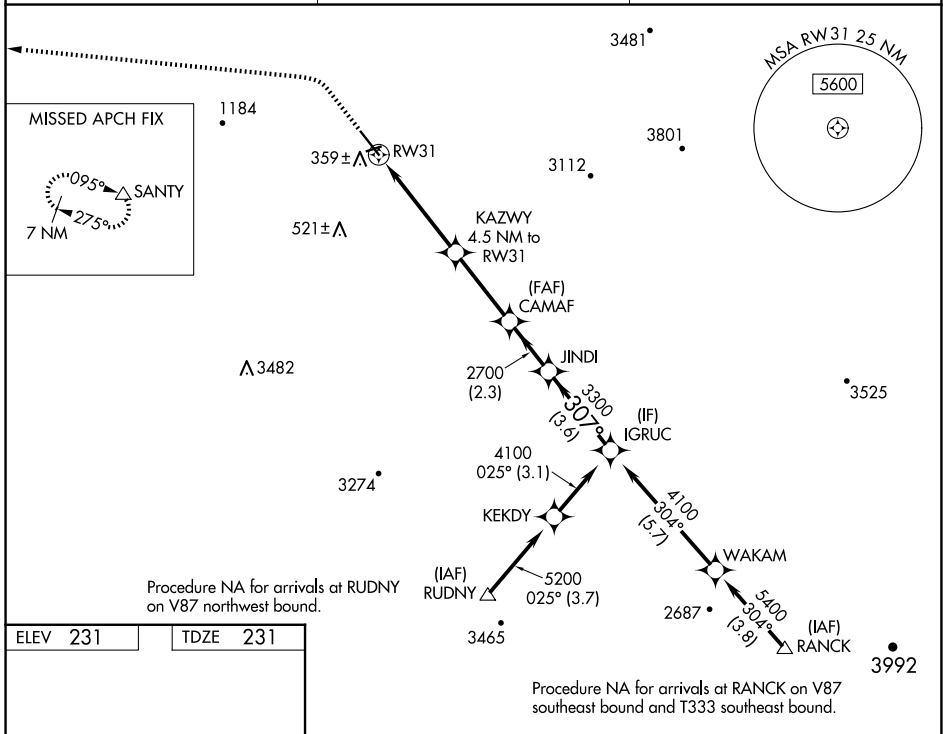
WAAS CH 93806 W31A	APP CRS 307°	Rwy Idg TDZE Apt Elev	6350 231 231
--	------------------------	-----------------------------	---

RNAV (GPS) RWY 31

HOLLISTER MUNI (CVH)

RNP APCH - GPS.	MISSED APPROACH: Climb to 1200, then climbing left turn to 7000 direct SANTY and hold, continue climb-in-hold to 7000.
<p>▼ Rwy 31 helicopter visibility reduction below ¼ SM NA.</p> <p>▲ For uncompensated Baro-VNAV systems, LNAV/VNAV NA below -15°C or above 54°C.</p>	

AWOS-3 120.425	NORCAL APP CON 124.525 348.675	UNICOM 123.0 (CTAF) 0
--------------------------	--	---------------------------------



1200	7000	SANTY		
<p>2.3 NM to RW31</p> <p>2.2 NM</p> <p>3.1 NM</p> <p>2.3 NM</p> <p>3.6 NM</p>		IGRUC		
<p>1700</p> <p>2700</p> <p>3300</p> <p>4100</p>		IGRUC	GP 3.00° TCH 44	
CATEGORY	A	B	C	D
LPV DA	657-1¼ 426 (500-1¼)			NA
LNAV/VNAV DA	750-1⅜ 519 (600-1⅜)			NA
LNAV MDA	1000-1 769 (800-1)	1000-1¼ 769 (800-1¼)	1000-2½ 769 (800-2½)	NA

SW-2, 11 JUN 2026 to 09 JUL 2026

SW-2, 11 JUN 2026 to 09 JUL 2026