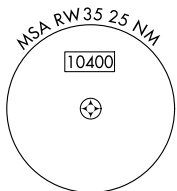
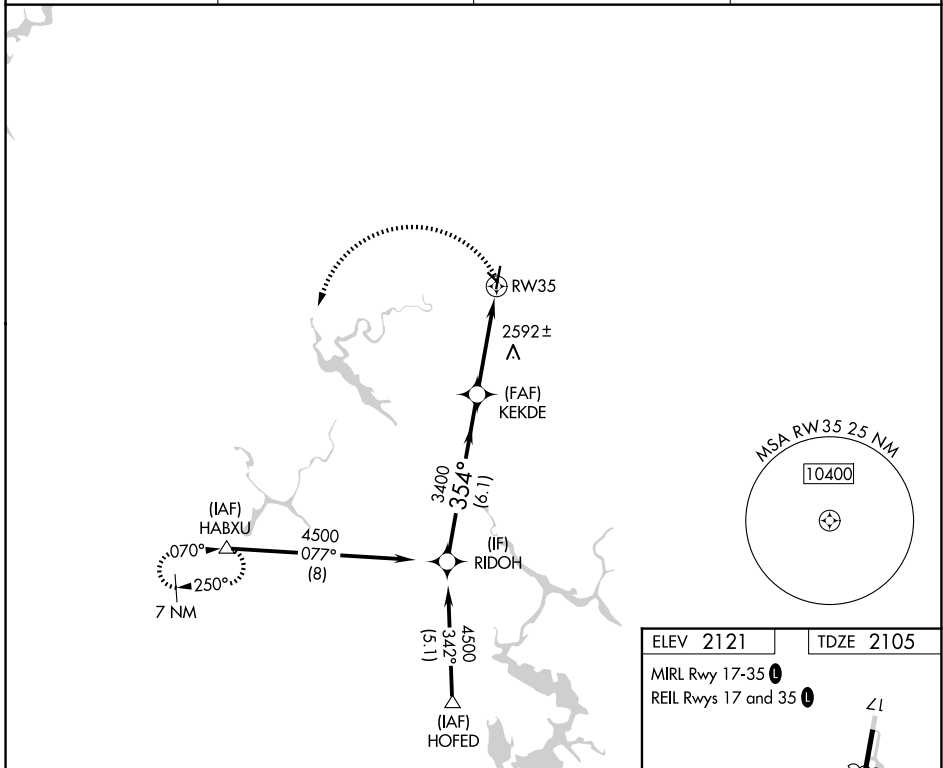


APP CRS	Rwy Ldg	4289
354°	TDZE	2105
	Apt Elev	2121

RNAV (GPS) RWY 35

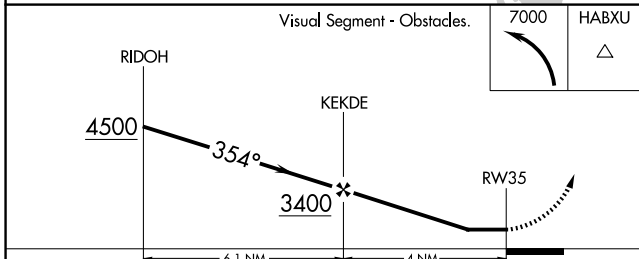
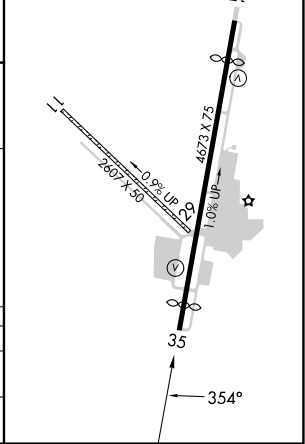
COLUMBIA (O22)

RNP APCH.		MISSED APPROACH: Climbing left turn to 7000 direct HABXU and hold, continue climb-in-hold to 7000.	
<p>▼ Circling NA to Rwys 11 and 29. Circling NA east of Rwy 17-35. Procedure NA at night. Rwy 35 helicopter visibility reduction below 1 SM NA.</p>			
AWOS-3	NORCAL APP CON	OAKLAND CENTER	UNICOM
124.65	125.1 363.2 (N/W)	121.25 327.0 (E/S)	122.975 (CTAF) ①



ELEV 2121	TDZE 2105
-----------	-----------

MIRL Rwy 17-35 ①
REIL Rwy 17 and 35 ①



CATEGORY	A	B	C	D
LNVA MDA	3140-1¼ 1035 (1100-1¼)	3140-1½ 1035 (1100-1½)	3140-3 1035 (1100-3)	NA
CIRCLING	3140-1¼ 1019 (1100-1¼)	3140-1½ 1019 (1100-1½)	3140-3 1019 (1100-3)	NA

SW-2, 11 JUN 2026 to 09 JUL 2026

SW-2, 11 JUN 2026 to 09 JUL 2026