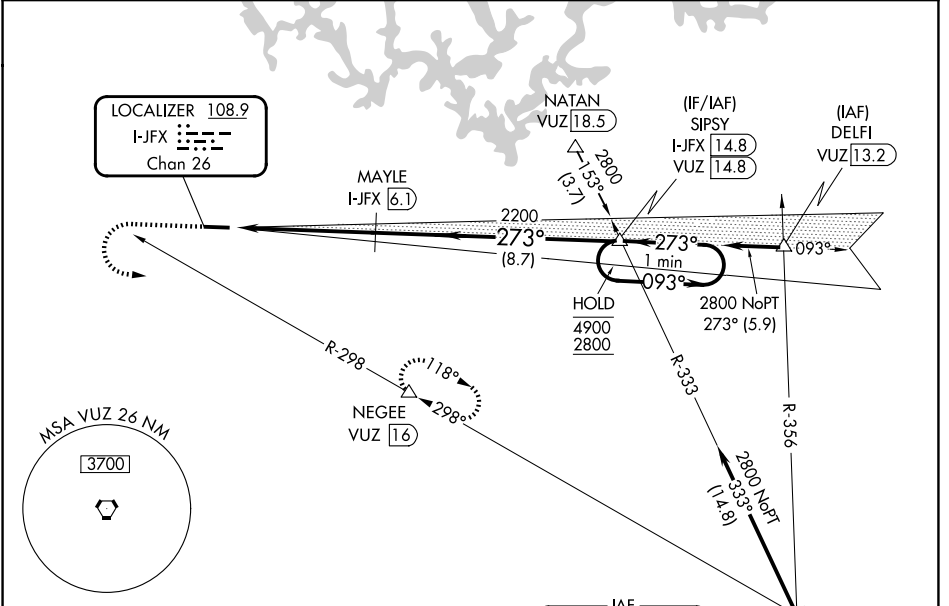


LOC/DME I-JFX 108.9 Chan 26	APP CRS 273°	Rwy Ldg TDZE Apt Elev	4800 481 483
--	------------------------	-----------------------------	---

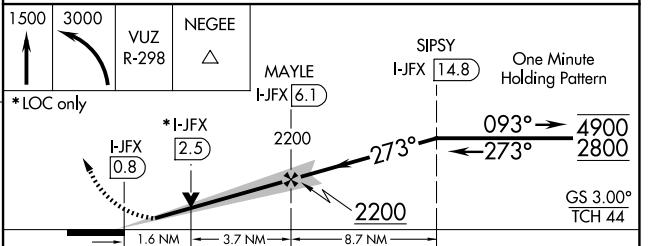
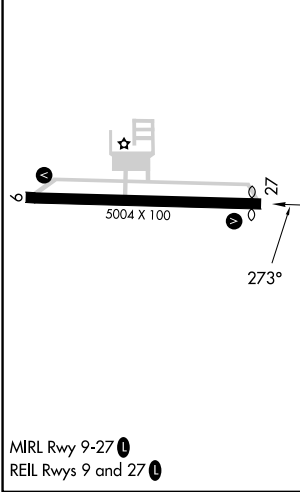
ILS or LOC RWY 27

WALKER COUNTY/BEVILL FLD (JFX)

DME required.		<p>▼ Rwy 27 helicopter visibility reduction below $\frac{3}{4}$ SM NA. VDP NA when using Birmingham altimeter setting. When local altimeter setting not received, use Birmingham altimeter setting; increase DA to 892 feet and S-ILS all Cats visibilities $\frac{1}{4}$ SM; increase all MDAs 120 feet and S-LOC Cats C and D and Circling Cats C and D visibility $\frac{1}{4}$ SM.</p>		<p>MISSED APPROACH: Climb to 1500 then climbing left turn to 3000 on VUZ VORTAC R-298 to NEGEE/16 DME and hold.</p>	
AWOS-3PT 119.225	BIRMINGHAM APP CON 127.675 338.2	CLNC DEL 121.725	GCO 121.725	UNICOM 123.075 (CTAF) 0	



ELEV 483	D	TDZE 481
----------	----------	----------



CATEGORY	A	B	C	D
S-ILS 27	788- $\frac{7}{8}$		307 (400- $\frac{7}{8}$)	
S-LOC 27	1040-1	559 (600-1)	1040-1 $\frac{5}{8}$	559 (600-1 $\frac{5}{8}$)
CIRCLING	1040-1 557 (600-1)	1080-1 597 (600-1)	1160-2 677 (700-2)	1360-2 $\frac{3}{4}$ 877 (900-2 $\frac{3}{4}$)

SE-4, 11 JUN 2026 to 09 JUL 2026

SE-4, 11 JUN 2026 to 09 JUL 2026