

RNAV (GPS) RWY 20

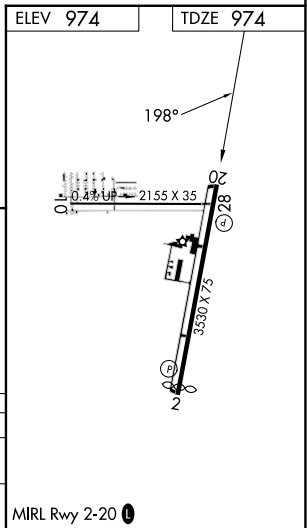
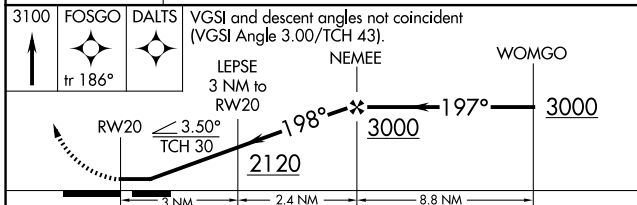
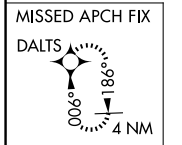
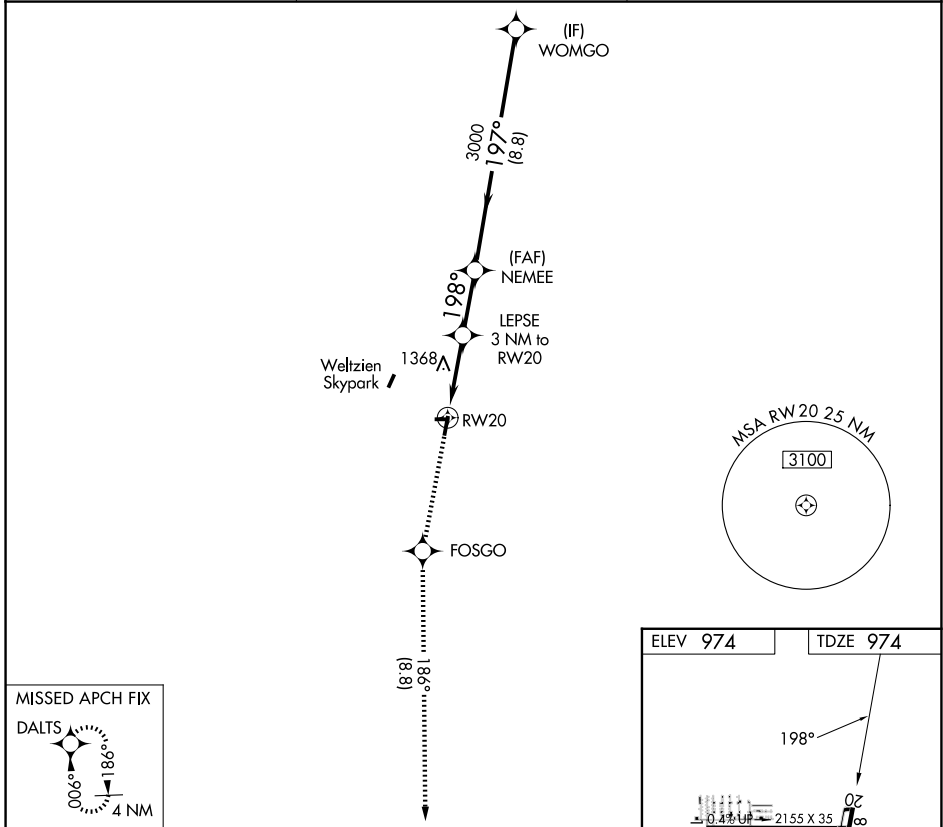
WADSWORTH MUNI (3G3)

APP CRS 198°	Rwy Ldg TDZE Apt Elev	3530 974 974
------------------------	-----------------------------	---

RNP APCH.
 ▼ Rwy 20 helicopter visibility reduction below 1 SM NA. Procedure NA at night.
 ▲ NA Circling NA west of Rwy 2-20. Use Wooster altimeter setting, when not received, use Akron-Canton Rgnl altimeter setting and increase all MDA 40 feet and LNAV visibility Cat C ½ SM.

MISSED APPROACH: Climb to 3100 direct FOSGO and on track 186° to DALTS and hold.

BJJ ASOS 118.075	CLEVELAND APP CON ★ 125.5 371.875	UNICOM 122.8 (CTAF) 0
----------------------------	---	---------------------------------



3100	FOSGO	DALTS	VGSi and descent angles not coincident (VGSi Angle 3.00/TCH 43).	
↑	fr 186°		LEPSE 3 NM to RWY 20	WOMGO
			NEMEE	
			3000	3000
			198°	197°
			2120	
			3 NM	2.4 NM 8.8 NM
CATEGORY	A	B	C	D
LNAV MDA	1720-1 746 (800-1)	1720-1¼ 746 (800-1¼)	1720-2 746 (800-2)	NA
CIRCLING	1720-1 746 (800-1)	1760-1¼ 786 (800-1¼)	1980-3 1006 (1100-3)	NA

MRL Rwy 2-20 0

EC-2, 11 JUN 2026 to 09 JUL 2026

EC-2, 11 JUN 2026 to 09 JUL 2026