

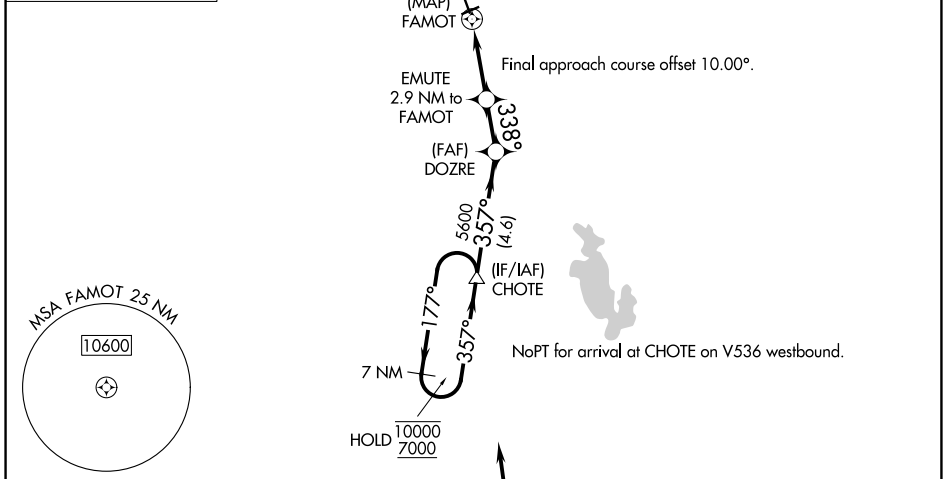
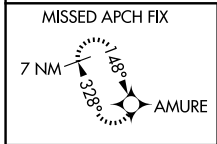
APP CRS <b>338°</b>	Rwy Ldg <b>5000</b>
	TDZE <b>3943</b>
	Apt Elev <b>3947</b>

# RNAV (GPS) RWY 33

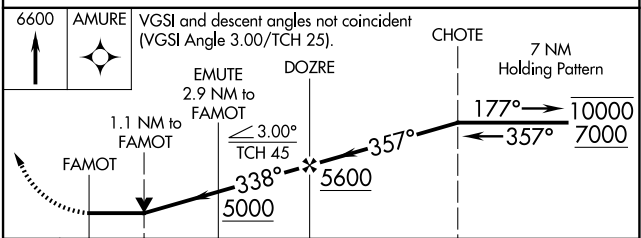
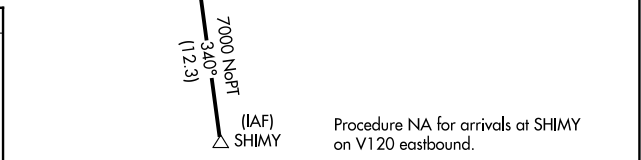
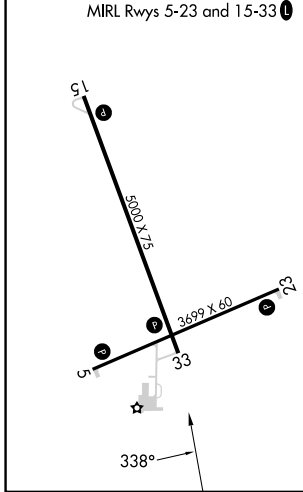
CHOTEAU (CII)

RNP APCH.	MISSED APPROACH: Climb to 6600 direct AMURE and hold.
NA Rwy 33 helicopter visibility reduction below 3/4 SM NA.	

AWOS-2 <b>119.275</b>	SALT LAKE CITY CENTER <b>133.4 285.4</b>	UNICOM <b>122.8 (CTAF)</b>
--------------------------	---	-------------------------------



ELEV 3947	TDZE 3943
-----------	-----------



	A	B	C	D
CATEGORY				
INAV MDA	4380-1	437 (500-1)	4380-1¼	437 (500-1¼)
CIRCLING	4440-1	493 (500-1)	4600-1¾ 653 (700-1¾)	4900-3 953 (1000-3)

NW-1, 11 JUN 2026 to 09 JUL 2026

NW-1, 11 JUN 2026 to 09 JUL 2026