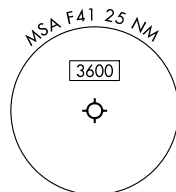


RNAV 1 - DME/DME/IRU or GPS required.

RADAR required.

LONE STAR DEP CON  
125.2 343.65  
CTAF  
122.9

TAKEOFF MINIMUMS  
Rwys 16, 34: Standard.



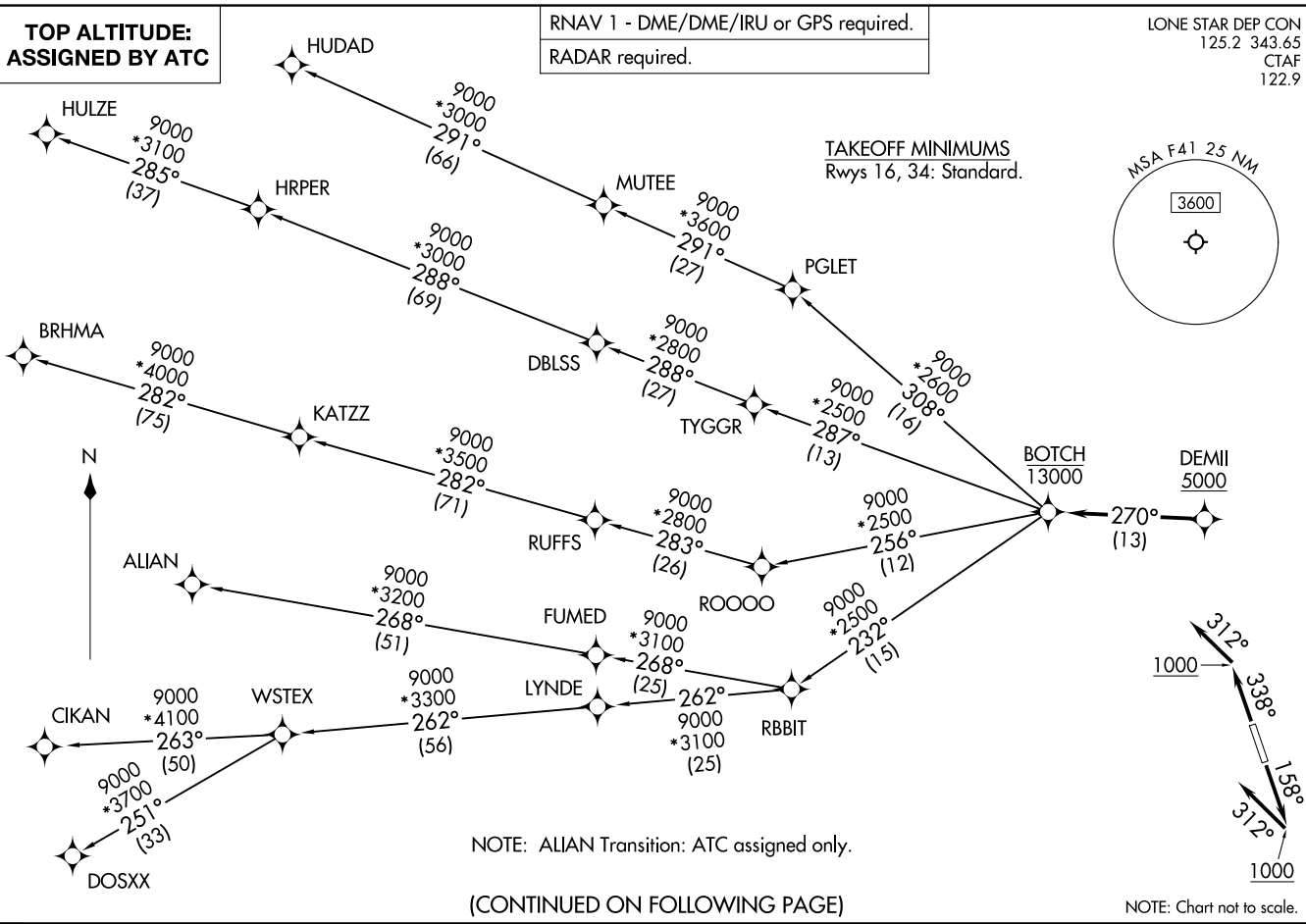
TOP ALTITUDE:  
ASSIGNED BY ATC

BOTCH TWO DEPARTURE (RNAV)  
(BOTCH2.BOTCH) 14MAY26

(BOTCH2.BOTCH) 26134  
BOTCH TWO DEPARTURE (RNAV)

AL-6830 (FAA)

ENNIS MUNI (F41)  
ENNIS, TEXAS



NOTE: ALIAN Transition: ATC assigned only.

(CONTINUED ON FOLLOWING PAGE)

NOTE: Chart not to scale.

ENNIS, TEXAS  
ENNIS MUNI (F41)

# BOTCH TWO DEPARTURE (RNAV)



## DEPARTURE ROUTE DESCRIPTION

TAKEOFF RUNWAY 16: Climb on heading 158° to 1000, then on heading 312° or as assigned by ATC, for vectors to cross DEMII at or above 5000, thence. . .

TAKEOFF RUNWAY 34: Climb on heading 338° to 1000, then on heading 312° or as assigned by ATC, for vectors to cross DEMII at or above 5000, thence. . .

. . . on track 270° to cross BOTCH at or below 13000, then on (transition). Maintain ATC assigned altitude, expect filed altitude 10 minutes after departure.

ALIAN TRANSITION (BOTCH2.ALIAN)

BRHMA TRANSITION (BOTCH2.BRHMA)

CIKAN TRANSITION (BOTCH2.CIKAN)

DOSXX TRANSITION (BOTCH2.DOSXX)

HUDAD TRANSITION (BOTCH2.HUDAD)

HULZE TRANSITION (BOTCH2.HULZE)

WSTEX TRANSITION (BOTCH2.WSTEX)

SC-2, 11 JUN 2026 to 09 JUL 2026

SC-2, 11 JUN 2026 to 09 JUL 2026