

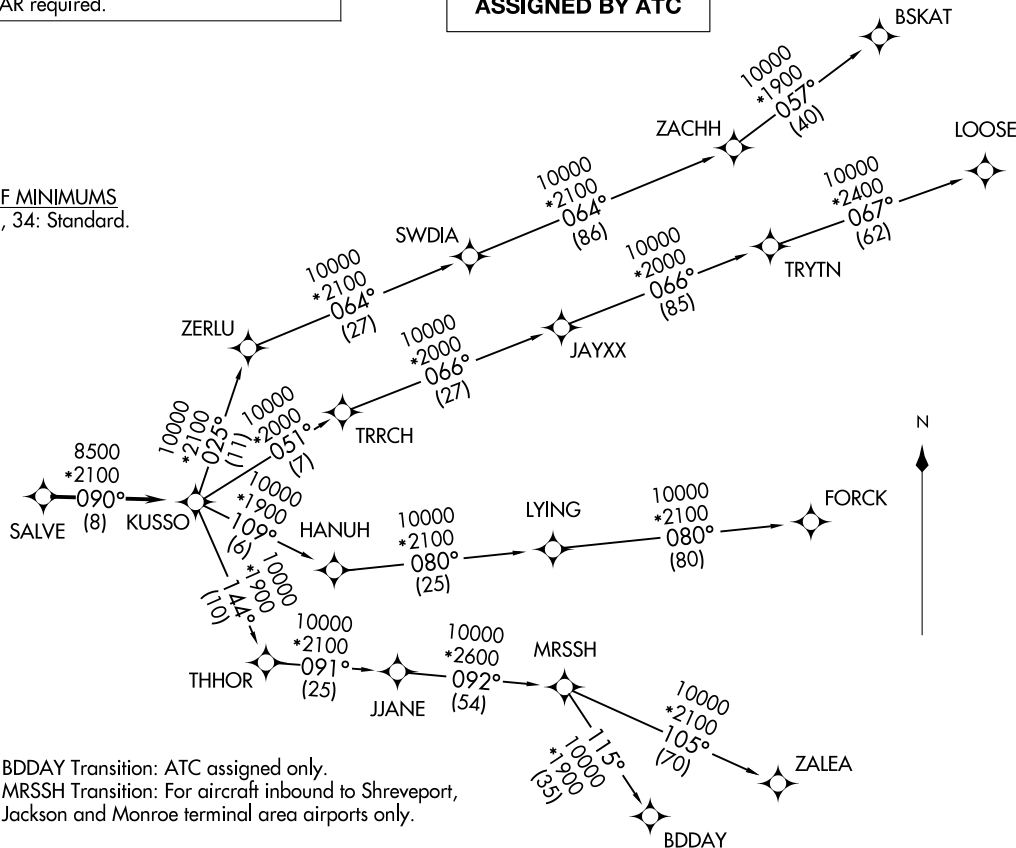
RNAV 1 - DME/DME/IRU or GPS required.

RADAR required.

**TOP ALTITUDE:
ASSIGNED BY ATC**

LONE STAR DEP CON
125.2 343.65
CTAF
122.9

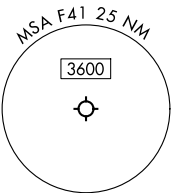
TAKEOFF MINIMUMS
Rwys 16, 34: Standard.



NOTE: BDDAY Transition: ATC assigned only.
NOTE: MRSSH Transition: For aircraft inbound to Shreveport, Jackson and Monroe terminal area airports.

(CONTINUED ON FOLLOWING PAGE)

NOTE: Chart not to scale.



KUSSO THREE DEPARTURE (RNAV)
(KUSSO3.KUSSO) 14MAY26

ENNIS, TEXAS
ENNIS MUNI (F41)

(KUSSO3.KUSSO) 26134
KUSSO THREE DEPARTURE (RNAV)

AL-6830 (FAA)

ENNIS, TEXAS
ENNIS MUNI (F41)

KUSSO THREE DEPARTURE (RNAV)



DEPARTURE ROUTE DESCRIPTION

When entering controlled airspace, fly heading assigned by ATC, expect RADAR vectors to SALVE, then on track 090° to KUSSO, then on assigned transition. Maintain ATC assigned altitude, expect filed altitude 10 minutes after departure.

- BDDAY TRANSITION (KUSSO3.BDDAY)
- BSKAT TRANSITION (KUSSO3.BSKAT)
- FORCK TRANSITION (KUSSO3.FORCK)
- LOOSE TRANSITION (KUSSO3.LOOSE)
- MRSSH TRANSITION (KUSSO3.MRSSH)
- ZALEA TRANSITION (KUSSO3.ZALEA)

SC-2, 11 JUN 2026 to 09 JUL 2026

SC-2, 11 JUN 2026 to 09 JUL 2026