

APP CRS 240°	Rwy Ldg TDZE Apt Elev	3301 1213 1215
------------------------	-----------------------------	---

RNAV (GPS) RWY 24

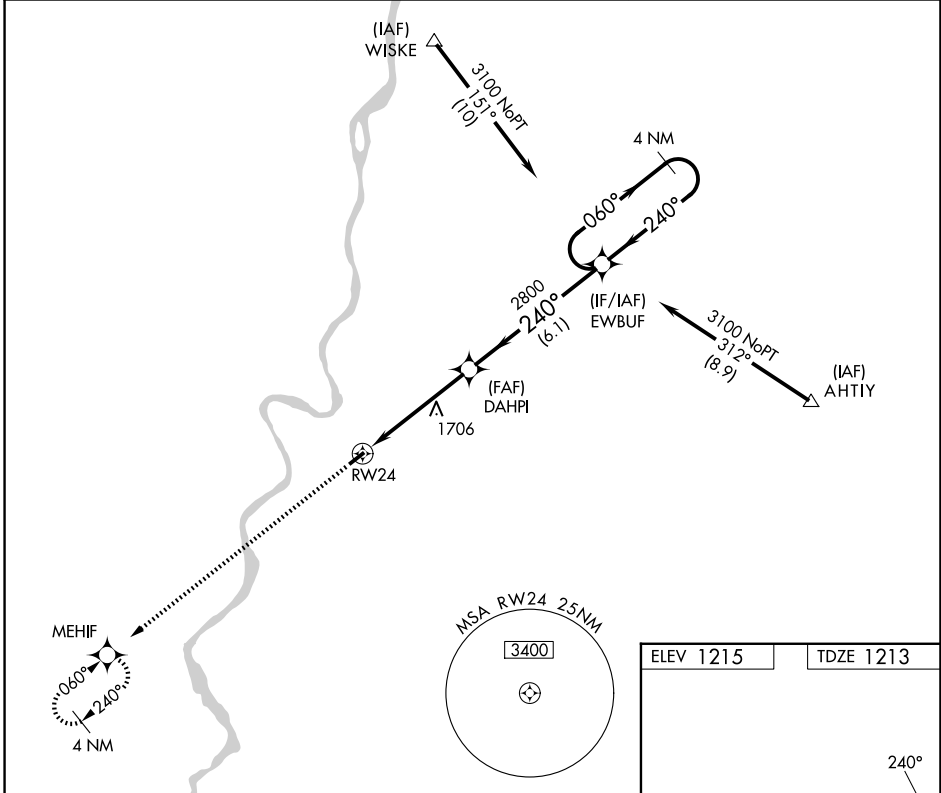
MARSHALL COUNTY (MPG)

RNP APCH.

When local altimeter setting not received, use Wheeling altimeter setting and increase all MDA 60 feet. Rwy 24 helicopter visibility reduction below 3/4 SM NA.

MISSED APPROACH: Climb to 3000 direct MEHIF and hold.

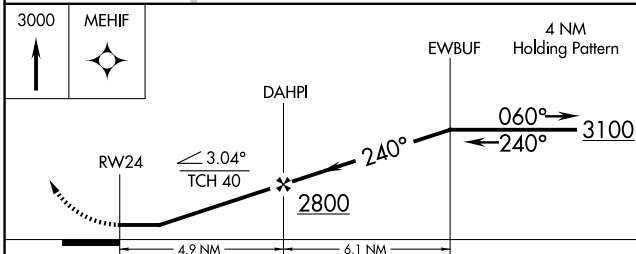
AWOS-3 119.05	CLEVELAND CENTER 126.95 239.30	UNICOM 122.7 (CTAF) 0
-------------------------	--	---------------------------------



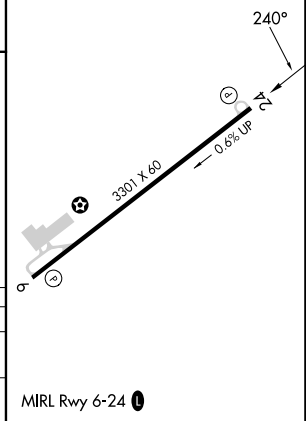
NE-4, 11 JUN 2026 to 09 JUL 2026

NE-4, 11 JUN 2026 to 09 JUL 2026

ELEV 1215	TDZE 1213
-----------	-----------



CATEGORY	A	B	C	D
LNVA MDA	1960-1 747 (800-1)	1960-1 1/4 747 (800-1 1/4)	1960-2 1/4 747 (800-2 1/4)	NA
CIRCLING	1960-1 745 (800-1)	1960-1 1/4 745 (800-1 1/4)	1960-2 1/4 745 (800-2 1/4)	NA



MIRL Rwy 6-24 0