

(CROL1.CROL1) 25275

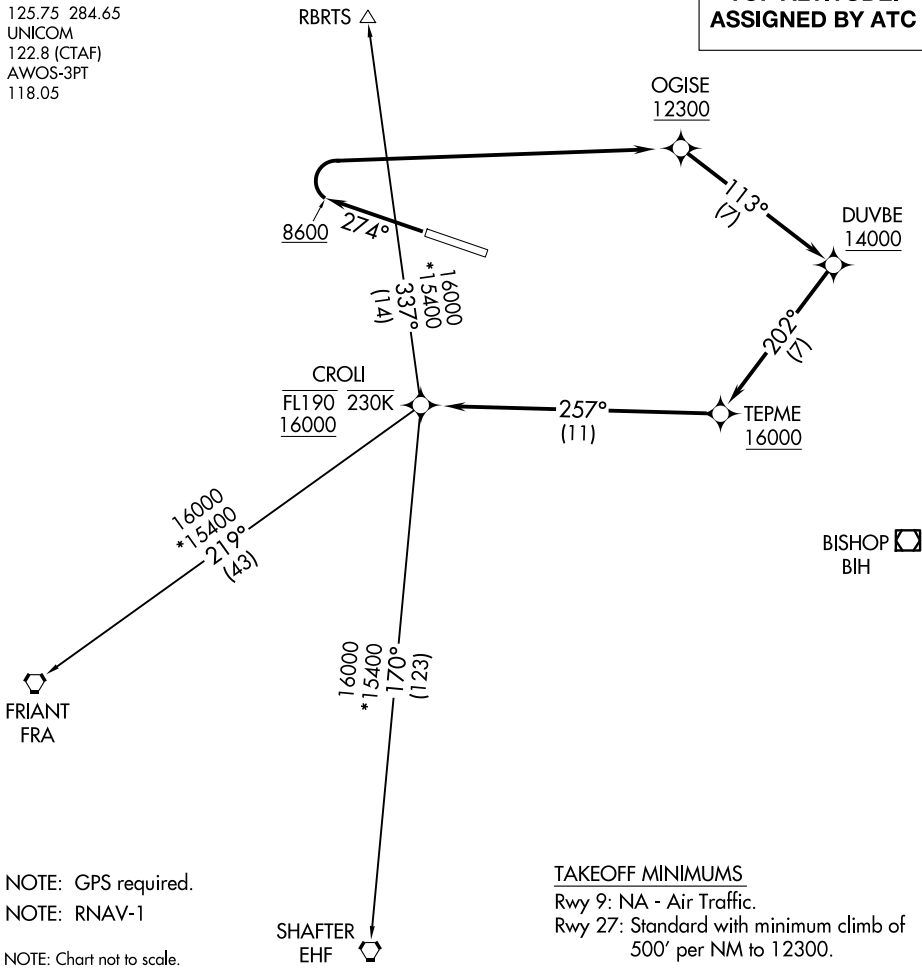
CROL1 ONE DEPARTURE (RNAV)

AL-6841 (FAA)

MAMMOTH YOSEMITE (MMH)
MAMMOTH LAKES, CALIFORNIA

OAKLAND APP CON
125.75 284.65
UNICOM
122.8 (CTAF)
AWOS-3PT
118.05

**TOP ALTITUDE:
ASSIGNED BY ATC**



NOTE: GPS required.

NOTE: RNAV-1

NOTE: Chart not to scale.

TAKEOFF MINIMUMS

Rwy 9: NA - Air Traffic.

Rwy 27: Standard with minimum climb of 500' per NM to 12300.

DEPARTURE ROUTE DESCRIPTION

TAKEOFF RUNWAY 27: Climb heading 274° to 8600, then right turn direct to cross OGISE at or above 12300, then on track 113° to cross DUVBE at or above 14000, then on track 202° to cross TEPME at or above 16000, then on track 257° to cross CROL1 at or above 16000 and at or below FL190, thence. . . .

. . . .on (transition) maintain 16000, expect filed altitude 10 minutes after departure.

SHAFTEF TRANSITION (CROL1 .EHF)

FRIANT TRANSITION (CROL1 .FRA)

RBRTS TRANSITION (CROL1 .RBRTS)

CROL1 ONE DEPARTURE (RNAV)

(CROL1.CROL1) 05MAR15

MAMMOTH LAKES, CALIFORNIA
MAMMOTH YOSEMITE (MMH)

SW-2, 11 JUN 2026 to 09 JUL 2026

SW-2, 11 JUN 2026 to 09 JUL 2026